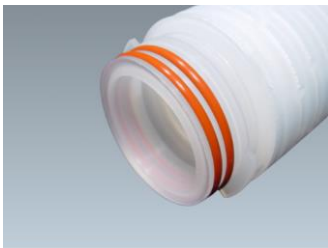


Cartridge Filter End Cap Guide



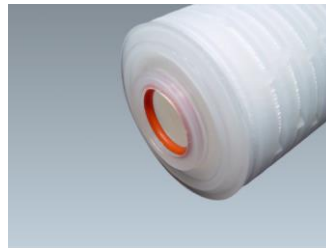
Use this guide to find the end caps that will fit your housing. The code to use when ordering your filter is shown in the list below. Reference our individual product data sheets to find detailed ordering information.



2-226 O-Ring



2-222 O-Ring



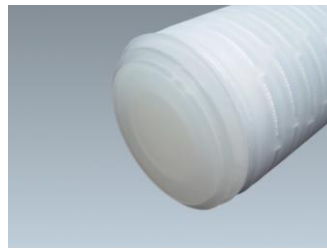
213/119 Internal O-Ring



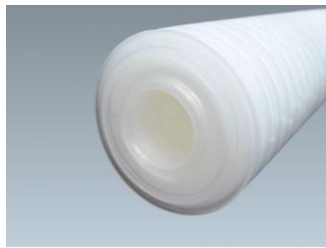
Flat Gasket



Spear/Fin



Flat Cap



Recessed Plug



020 Internal O-Ring



2-223 O-Ring



2-222 O-Ring/3-Tab*

*Stainless steel support rings are available in the 2-222 and 2-226 end caps. Please reference the ordering guide on individual product data sheets for how to specify stainless steel support rings.

End Cap Codes Note: Consult factory if other End Cap Configurations are required.

- | | |
|----------------------------------|---|
| 0 = Flat Gasket, DOE | 24 = 2-222 O-ring 3 Tab/Spear |
| 1 = Flat Gasket/Plug | 25 = Short 2-222/Plug |
| 2 = 2-222 O-ring/Plug | 26 = Short 2-222/Flat Cap |
| 3 = 213/119 Internal O-ring DOE | 27 = 226 Spacer / Flat Spear |
| 4 = 213/119 Internal O-ring/Plug | 28 = 222 Short / Spear |
| 5 = 2-222 O-ring/Flat | 29 = 2-226 (No Tabs) / Flat Cap |
| 6 = 2-226 O-ring/Flat | 32 = Internal O-Ring/Flat |
| 7 = 020 O-ring/Plug | 33 = 226/Plug |
| 8 = 2-222 O-ring/Spear | 40 = 2-116 Internal O-Ring/Flat with ring – Junior Cartridge Specific |
| 9 = 2-226 O-ring/Spear | 44 = 2-222/Poly Spring - GDMB Specific |
| 21 = 2-223 O-ring/Flat | |
| 22 = 2-223 O-ring/Spear | |
| 23 = 2-222 O-ring 3 Tab/Flat | |