



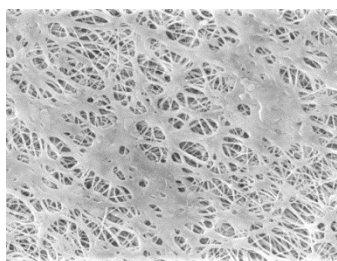
ETM Filters

PTFE Membrane



ETM cartridge and capsule filters consist of a single layer Polytetrafluoroethylene (PTFE) membrane. Designed to meet the needs of the electronics and high-purity chemical industries, ETM products are resistant to virtually all chemicals making them very effective in removing particles in gas and non-aqueous liquid filtration. They are most often used as final filters at the point-of-use, such as at tools. The ETM can also be ordered pre-wetted with water for use in aqueous solutions. Pore sizes range from 0.05 to 5.0 μm and the filter sizes scale from laboratory to full production using identical materials to ensure consistent results. Each filter is individually tested to ensure integrity.

Critical Process provides unrivaled delivery times, technical consulting before purchasing, and very competitively priced high-performance products. Our comprehensive testing & analysis and validation services support your team whenever they need it. Your process experts partnering with our filtration experts is how we deliver your company's solution right the first time.



ETM filters are recommended for:

- Compressed Air
- Pressurized Gases
- Non-Aqueous Chemicals
- Solvents
- Tank Ventilation

Fine Particle Removal

Tank Vent & Process Gas



CARTRIDGES – Nominal Dimensions
Length: 5 to 40 in. (12.7 to 101.6 cm)
Outside Diameter: 2.75 in. (7.0 cm)



CAPSULES – Nominal Dimensions
Length: 2 to 30 in. (5.1 to 76.2 cm)
Outside Diameter: 3.50 in. (8.9 cm)

Maximum Operating Parameters

	CARTRIDGES	CAPSULES
Liquid Operational Pressure	N/A	80 psi at 68 °F (5.52 bard at 20 °C)
Gases Operational Pressure	N/A	60 psi at 68 °F (4.14 bar at 20 °C)
Operating Temperature (water)	180 °F at 30 psid (82 °C at 2.07 bard)	110 °F at 30 psid (43 °C at 2.07 bard)
Forward Differential Pressure	80 psid at 68 °F (5.52 bard at 20 °C) (Liquid and Gas)	Liquid - 80 psid at 68 °F (5.52 bard at 20 °C) Gas - 60 psi at 68 °F (4.14 bar at 20 °C)
Reverse Differential Pressure	50 psid at 68 °F (3.45 bard at 20 °C)	50 psid at 68 °F (3.45 bard at 20 °C)
Recommended Changeout Pressure	35 psid (2.41 bard)	35 psid (2.41 bard)

Sanitization & Sterilization

Filtered Hot Water*	90 °C (194 °F), 30 minutes, multiple cycles, max 3 psid forward flow	N/A
Inline Steam*	275 °F (135 °C), 30 min, 25+ cycles	N/A
Autoclave*	250 °F (121 °C), 30 min, 25+ cycles	250 °F (121 °C), 30 min, 25+ cycles
Chemical Sanitization	Performed using industry standard concentrations of hydrogen peroxide, peracetic acid, sodium hypochlorite and other selected chemicals.	

*Cartridge Filters – For all elevated temperature procedures above, a stainless-steel support ring is required.

Filtration Area (Nominal)

	CAPSULES	CARTRIDGES AND CAPSULES				CARTRIDGES
Length	2"	5"	10"	20"	30"	40"
	5.08cm	12.7cm	25.4cm	50.8cm	76.2cm	101.6cm
Area	1.0 ft ²	3.0 ft ²	7.0 ft ²	14.0 ft ²	21.0 ft ²	28.0 ft ²
	0.10m ²	0.28m ²	0.65m ²	1.30m ²	1.95m ²	2.60m ²

Construction Materials

Filtration Media	Polytetrafluoroethylene (PTFE) Membrane
Media Support	Polypropylene
End Caps, Center Core, Outer Support Cage, Capsule Housing	Polypropylene
Sealing Method	Thermal Bonding
O-Rings/Gaskets Cartridges only	Buna, Viton® (or FKM), EPDM, Silicone, FEP Encapsulated Silicone, FEP Encapsulated Viton (or FKM)

Integrity Testing

PORE SIZE	BUBBLE POINT MINIMUM*	
	PSIG	BARG
μm		
0.05	43	3.0
0.10	22	1.5
0.22	15	1.0
0.45	9	0.62
1.0	6	0.41
3.0	2	0.14
5.0	1	0.07

* Bubble Point for membrane wetted with 60% IPA / 40% water solution.

Extractables

ETM filters typically exhibit low levels of non-volatile residues.

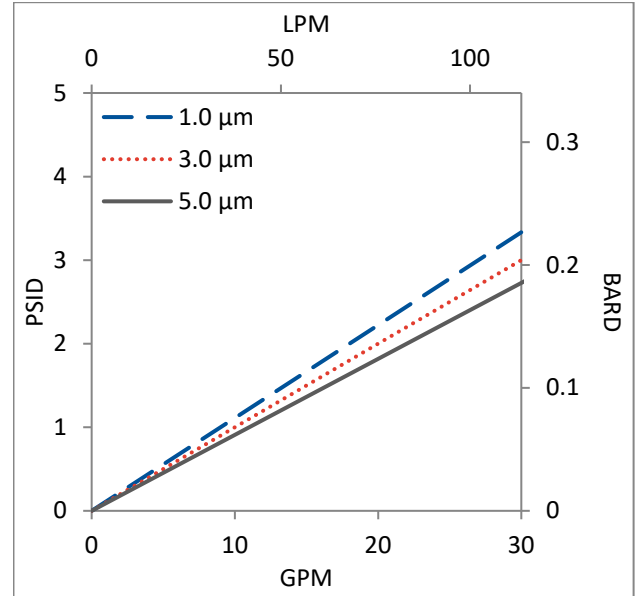
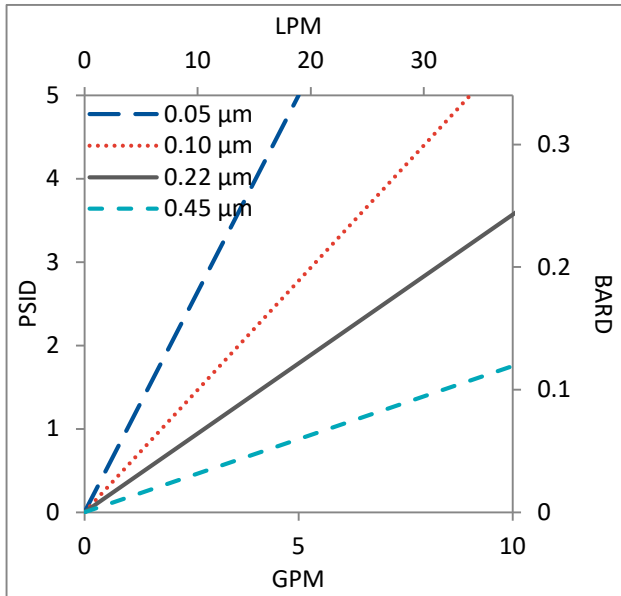
TOC and Conductivity

ETM filter water effluent conforms with the TOC and water conductivity standards of SEMI Standard F63 after an appropriate flush with ultrapure water.

Non-Fiber Releasing

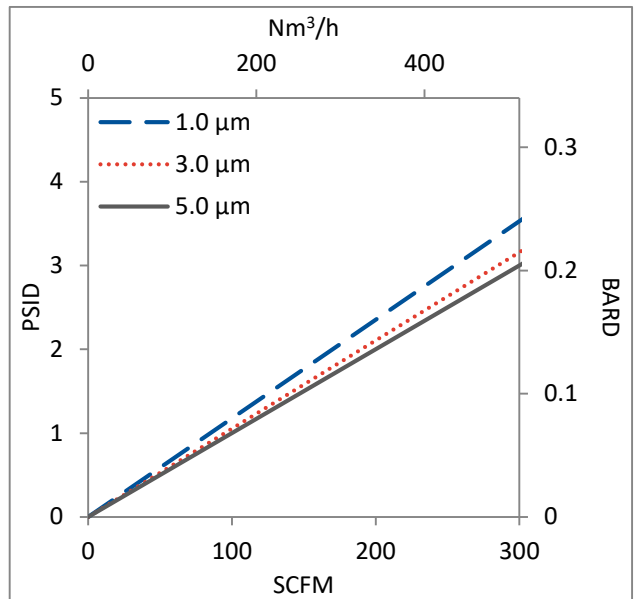
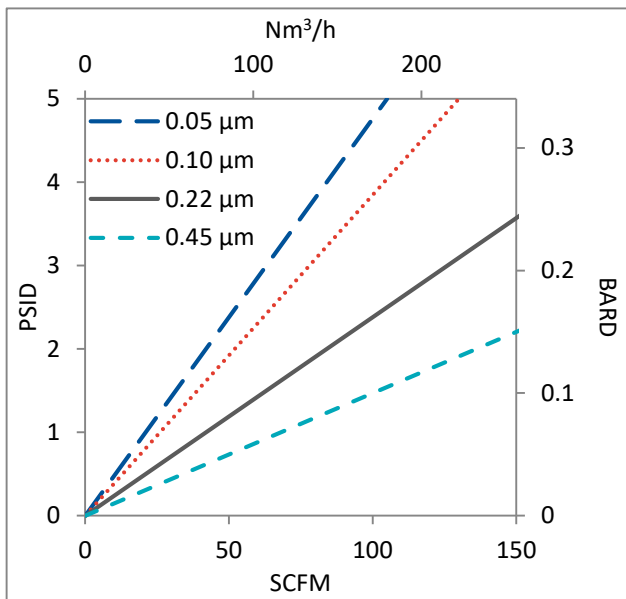
ETM filters comply with Title 21 CFR sections 210.3 (b)(6) and 211.72, for non-fiber releasing filters.

Water Flow Rates for ETM Cartridges by Pore Size



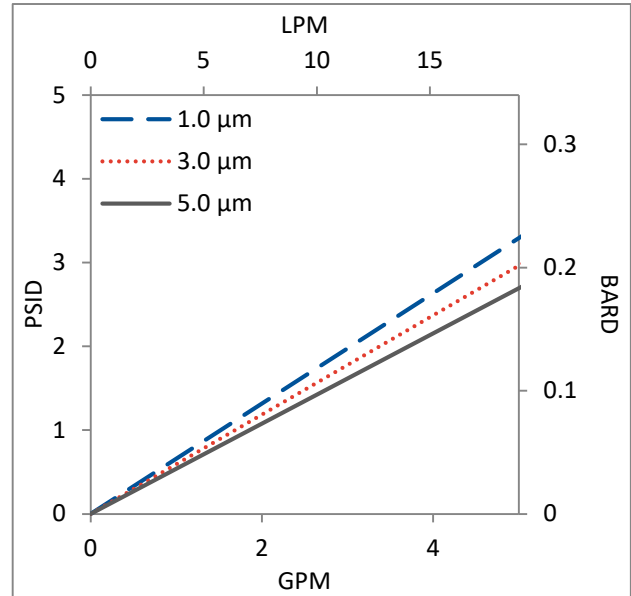
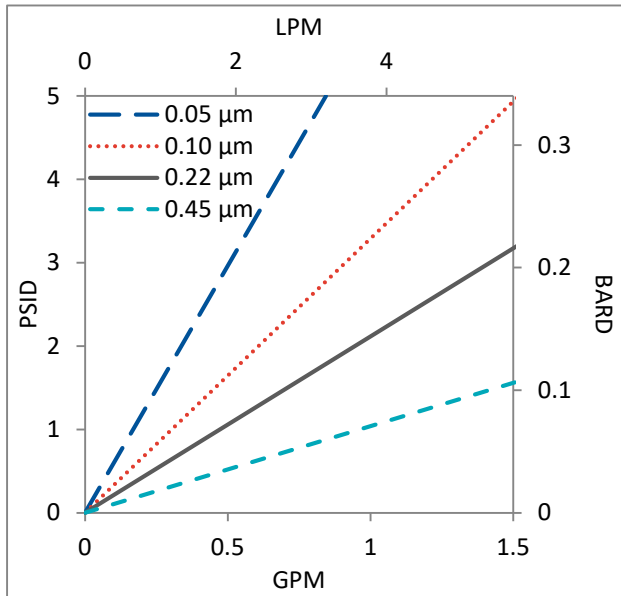
Flow rates for Cartridge filters are per 10-inch length. The test fluid is water or compressed air at ambient temperature.

Air Flow Rates for ETM Cartridges by Pore Size



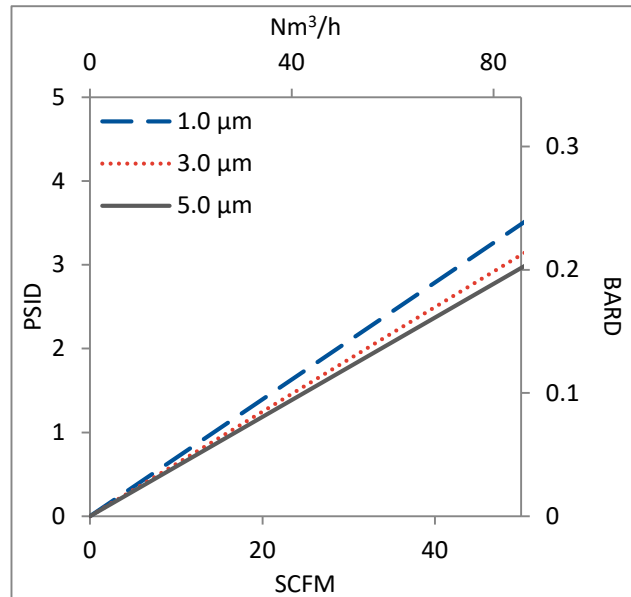
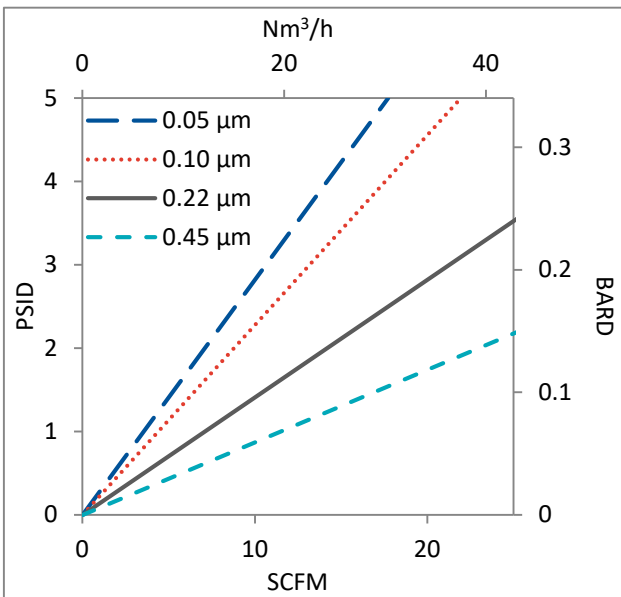
Flow rates for Cartridge filters are per 10-inch length. The test fluid is water or compressed air at ambient temperature.

Water Flow Rates for ETM Capsules by Pore Size



Flow rates for Capsule filters are tested using a 2" capsule filter with 1" sanitary inlet and outlet ports. The test fluid is water or compressed air at ambient temperature. Flow rates for larger capsules will scale with filtration area. Rates will vary based on end configuration of the capsule.

Air Flow Rates for ETM Capsules by Pore Size



Flow rates for Capsule filters are tested using a 2" capsule filter with 1" sanitary inlet and outlet ports. The test fluid is water or compressed air at ambient temperature. Flow rates for larger capsules will scale with filtration area. Rates will vary based on end configuration of the capsule.

ETM Filters Ordering Information

Fill in the corresponding codes in the boxes below to build your Part Number.

To consult with one of our technical team members, request a quote or place an order:
call (603) 880-4420 or [contact us here](#).

Cartridge Filters

ETM 000

Pore Size Code	SS Ring	Length	O-Ring/Gasket Code	End Cap Code*
-05 = 0.05 μ m -10 = 0.10 μ m -20 = 0.22 μ m -40 = 0.45 μ m 1-0 = 1.0 μ m 3-0 = 3.0 μ m 5-0 = 5.0 μ m	S = Ring N = No Ring	05 = 5 in. (12.7 cm) 97 = 9.75 in. (24.8 cm) (DOE only) 01 = 10 in. (25.4 cm) 02 = 20 in. (50.8 cm) 03 = 30 in. (76.2 cm) 04 = 40 in. (101.6 cm)	S = Silicone B = Buna V = Viton (or FKM) T = FEP Encapsulated Viton (or FKM) E = EPDM R = FEP Encapsulated Silicone	0 = Flat Gasket, DOE 2 = 2-222 O-ring/Plug 4 = 213/119 Internal O-ring/Plug 5 = 2-222 O-ring/Flat 6 = 2-226 O-ring/Flat 8 = 2-222 O-ring/Spear 9 = 2-226 O-ring/Spear

*Additional end configurations available

Capsule Filters

CP ETM N 000 -

Pore Size Code	Length	Inlet	Outlet	Side Vent Options	O-Rings
-05 = 0.05 μ m -10 = 0.10 μ m -20 = 0.22 μ m -40 = 0.45 μ m 1-0 = 1.0 μ m 3-0 = 3.0 μ m 5-0 = 5.0 μ m	A = 2" B = 5" 1 = 10" 2 = 20" 3 = 30"	A = 1/4" Female NPT B = 1/4" Male NPT C = 3/8" Female NPT D = 1/2" Female NPT E = 1/2" Male NPT F = 1" Sanitary G = Hose Barb* H = 1 1/2" Sanitary with side vent I = 1/2" Single Stepped Barb with side vent J = 3/4" Single Step Barb with Side Vent Y = 3/8" Compression (JACO®) (Top Luer lock vent only) Z = 6mm Quick Disconnect (Top Luer lock vent only)	A = 1/4" Female NPT B = 1/4" Male NPT C = 3/8" Female NPT D = 1/2" Female NPT E = 1/2" Male NPT F = 1" Sanitary G = Hose Barb* H = 1 1/2" Sanitary with side vent I = 1/2" Single Stepped Barb with side vent IB = 1/2" Single Stepped Barb with filling bell and side vent J = 3/4" Single Step Barb with Side Vent Y = 3/8" Compression (JACO®) (Top Luer lock vent only) Z = 6mm Quick Disconnect (Top Luer lock vent only)	1 = Luer Lock 2 = 1/8" Bleed Valve 3 = 1/4" Bleed Valve	(Bleed Valves Only) S = Silicone E = EP V = Viton B = Buna K = FFKM

*Fits hoses/tubes with inner diameter
11/32 to 9/16 inches



One Chestnut Street
Nashua, NH 03060
603.880.4420
FAX: 603.880.4536
CriticalProcess.com

The information contained herein is subject to change without notice. The Critical Process Filtration logo is a trademark of Critical Process Filtration, Inc. Viton is a trademark of DuPont Performance Elastomers L.L.C.
© 2025 Critical Process Filtration, Inc. • All Rights Reserved

Data Sheet ETMDS Rev C