

ENM Filters

Nylon 6,6 Membrane



Particle Filtration

Clarification & Prefiltration

ENM cartridge and capsule filters are made with Nylon 6,6 membrane. These long-proven filters are used for ultrafine particle removal in ultrapure water, chemicals, solvents and other aqueous solutions. Pore sizes range from 0.10 to 0.65 μm and the filter sizes scale from laboratory to full production using identical materials to ensure consistent results.

The ENM filters have high retention and throughput as well as broad chemical compatibility making them well suited for the filtration of solvents and other harsh chemicals. They are used to as part of particle contamination control systems and remove ultrafine particles.

ENM filters are pulse power flushed until the rinse effluent reaches 18+ Megohm-cm and less than 3ppb TOC. Each filter is individually tested to ensure integrity.

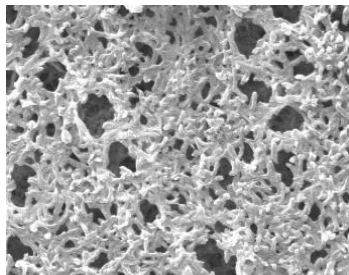
Critical Process provides unrivaled delivery times, technical consulting before purchasing, and very competitively priced high-performance products. Our comprehensive testing & analysis and validation services support your team whenever they need it. Your process experts partnering with our filtration experts is how we deliver your company's solution right the first time.



CARTRIDGES – Nominal Dimensions

Length: 5 to 40 in. (12.7 to 101.6 cm)

Outside Diameter: 2.75 in. (7.0cm)



ENM filters are recommended for:

- Ultrapure Water
- Chemicals
- Solvents
- Photoresists
- Developers



CAPSULES – Nominal Dimensions

Length: 2 to 30 in. (5.1 to 76.2 cm)

Outside Diameter: 3.50 in. (8.9 cm)

Maximum Operating Parameters

	CARTRIDGES	CAPSULES
Liquid Operational Pressure	N/A	80 psid at 68 °F (5.51 bard at 20 °C)
Gases Operational Pressure	N/A	60 psid at 68 °F (4.13 bar at 20 °C)
Operating Temperature (water)	180 °F at 30 psid (82 °C at 2.06 bard)	110 °F at 30 psid (43 °C at 2.06 bard)
Forward Differential Pressure	80 psid at 68 °F (5.51 bard at 20 °C) (Liquid and Gas)	Liquid - 80 psid at 68 °F (5.51 bard at 20 °C) Gas - 60 psid at 68 °F (4.13 bar at 20 °C)
Reverse Differential Pressure	50 psid at 68 °F (3.44 bard at 20 °C)	50 psid at 68 °F (3.44 bard at 20 °C)
Recommended Changeout Pressure	35 psid (2.41 bard)	35 psid (2.41 bard)

Sanitization & Sterilization

Filtered Hot Water* cycles, max 3 psid forward flow	90 °C (194 °F), 30 minutes, N/A	multiple
Inline Steam*	275 °F (135 °C), 30 min, 25+ cycles	N/A
Autoclave*	250 °F (121 °C), 30 min, 25+ cycles	250 °F (121 °C), 30 min, 25+ cycles
Chemical Sanitization	Performed using industry standard concentrations of hydrogen peroxide, peracetic acid, and other selected chemicals.	

*Cartridge Filters – For all elevated temperature procedures above, a stainless-steel support ring is required.

Filtration Area

	CAPSULES	CARTRIDGES AND CAPSULES				CARTRIDGES
	2"	5"	10"	20"	30"	40"
Length	5.08cm	12.7cm	25.4cm	50.8cm	76.2cm	101.6cm
Area	1.2 ft ²	3.3 ft ²	7.0 ft ²	14.0 ft ²	21.0 ft ²	28.0 ft ²
	0.11m ²	0.30m ²	0.65m ²	1.30m ²	1.95m ²	2.60m ²

Integrity Testing

PORE SIZE	DIFFUSION TEST PRESSURE*	
	PSIG	BARG
μm		
0.10	48	3.30
0.22	35	2.41
0.45	20	1.37
0.65	15	1.03

DIFFUSION SPECIFICATIONS*						
Length	2"	5"	10"	20"	30"	40"
mL/min	≤ 4.3	≤ 14.1	≤ 30	≤ 60	≤ 90	≤ 120

* All specifications are for water wetted membrane
 ** Test pressure exceeds operational limits of capsule filters.
 Use the Diffusion Test method.

Construction Materials

Filtration Media	Nylon 6,6 Membrane with polyester support
Media Support	Polypropylene
End Caps, Center Core, Outer Support Cage, Capsule Housing	Polypropylene
Sealing Method	Thermal Bonding
O-Rings/Gaskets Cartridges only	Buna, Viton® (or FKM), EPDM, Silicone, FEP Encapsulated Silicone, FEP Encapsulated Viton (or FKM)

Extractables

ENM filters typically exhibit low levels of non-volatile residues.

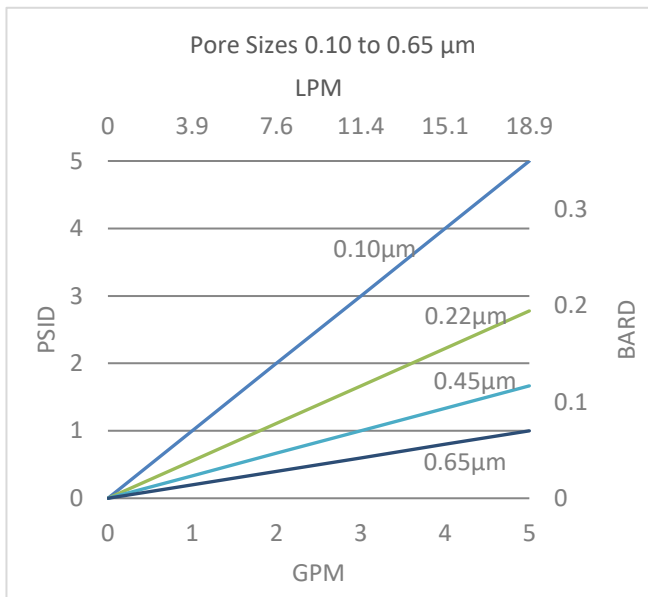
TOC and Conductivity

ENM filter water effluent conforms with the TOC and water conductivity standards of SEMI Standard F63 after an appropriate flush with ultrapure water.

Non-Fiber Releasing

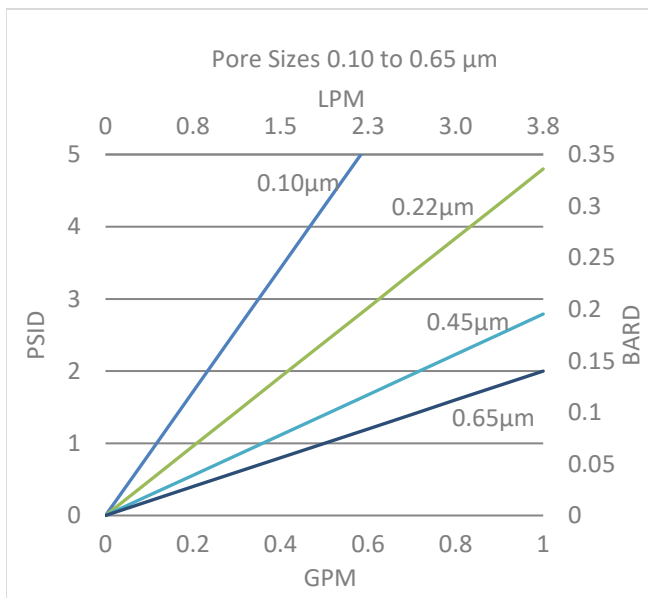
ENM filters comply with Title 21 CFR sections 210.3 (b)(6) and 211.72, for non-fiber releasing filters.

Flow Rates for ENM Cartridges



Flow rates for Cartridge filters are per 10-inch length. The test fluid is water at ambient temperature.

Flow Rates for ENM Capsules

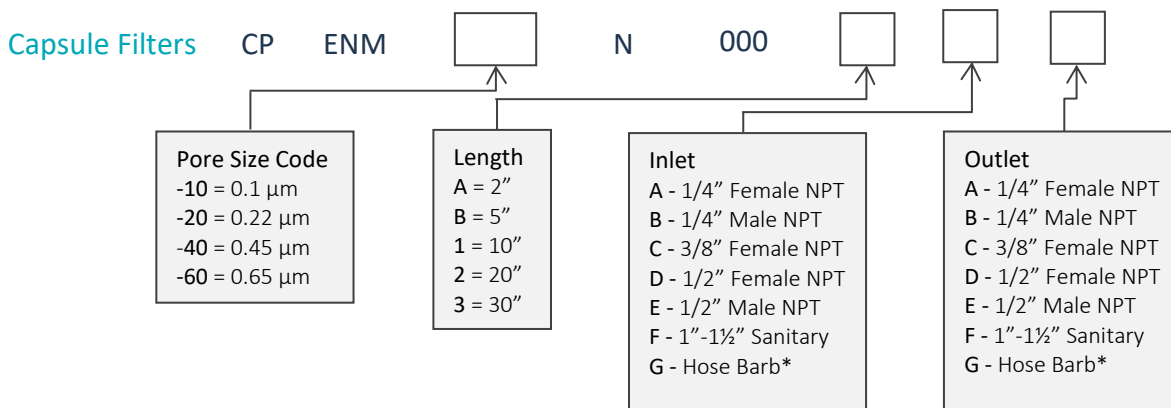
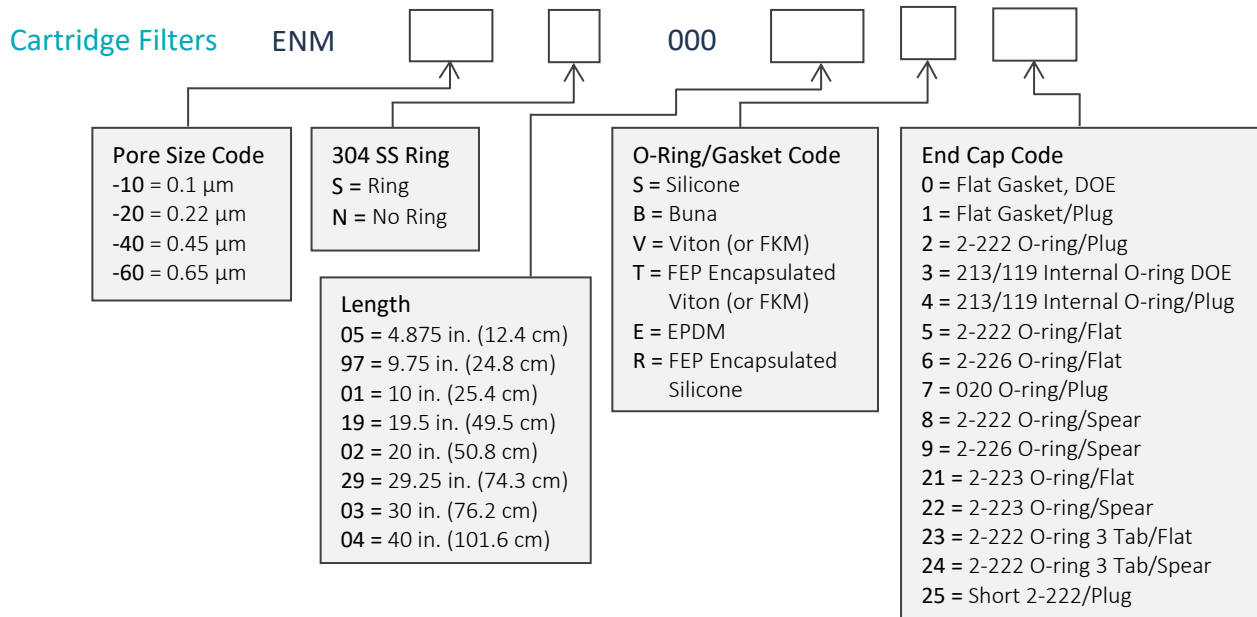


Flow rates for Capsule filters are per square foot of membrane area. The test fluid is water at ambient temperature. Flows are tested using a 2" capsule filter with 1/2" FNPT inlet and outlet ports. Rates will vary based on end configuration of the capsule.

ENM Filters Ordering Information

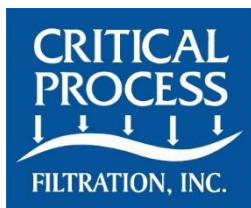
All Critical Process filters are configurable to meet customer specifications.
Fill in the corresponding codes in the boxes below to build your Part Number.

To consult with one of our technical team members, request a quote or place an order:
call (603) 880-4220 Ext. 106, or send an email to sales@criticalprocess.com



Housings

CPF offers Model CSH sanitary housings in Single-Round (Inline and T-Style) and Multi-Round (3, 6, 8, 12 and 21-round) configurations.



One Chestnut Street
Nashua, NH 03060
603.880.4420
FAX: 603.880.4536
CriticalProcess.com

The information contained herein is subject to change without notice. The Critical Process Filtration logo is a trademark of Critical Process Filtration, Inc. Viton is a trademark of DuPont Performance Elastomers L.L.C.
© 1998-2019 Critical Process Filtration, Inc. • All Rights Reserved

Data Sheet ENMDS0919 Rev-