

GDMB Filters

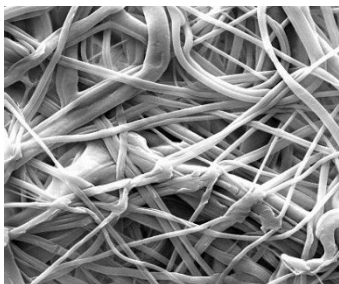
Melt-Blown Polypropylene Depth Media



GDMB filters are part of Critical Process Filtration's economical, general service product line that can be used to lower the total cost of filtration from simple to the most complex applications. Produced using the same quality materials and manufacturing excellence as our other product lines, you can be assured of their performance, dependability and scalability. While general service filters are not integrity tested or validated for retention, these highly efficient filters remove large amounts of contaminants early in the process to reduce the load on your expensive downstream filters. They are also useful as stand-alone clarifying or particle removal filters in less critical applications.

GDMB Meltblown cartridge and capsule filters are made with a continuous spun bonding technology that assures a consistent media for prefiltering a wide range of liquids. Its 100% polypropylene construction provides wide chemical compatibility and low extractables. Pore sizes range from 1 to 100 μm .

Critical Process provides unrivaled delivery times, technical consulting before purchasing, and very competitively priced high-performance products. Our comprehensive testing/analysis and validation services support your team whenever they need it. Your process experts partnering with our filtration experts is how we deliver your company's solution right the first time.



GDMB filters are recommended for the prefiltration of:

- Chemicals
- Plating Solutions
- Wash Solutions
- Potable Water
- Water Purification

Clarification & Prefiltration

Particle Filtration



CARTRIDGES – Nominal Dimensions

Length: 5 to 40 in. (12.7 to 101.6 cm)

Outside Diameter: 2.50 in. (6.35 cm)



CAPSULES – Nominal Dimensions

Length: 2 to 30 in. (5.1 to 76.2 cm)

Outside Diameter: 3.50 in. (8.9 cm)

Maximum Operating Parameters

	CARTRIDGES	CAPSULES
Liquid Operational Pressure	N/A	80 psi at 68 °F (5.52 bard at 20 °C)
Gases Operational Pressure	N/A	60 psi at 68 °F (4.14 bar at 20 °C)
Operating Temperature (water)	140 °F at 30 psid (60 °C at 2.07 bard)	140 °F at 30 psid (60 °C at 2.07 bard)
Forward Differential Pressure	50 psid at 68 °F (3.45 bard at 20 °C)	50 psid at 68 °F (3.45 bard at 20 °C)
Reverse Differential Pressure	20 psid at 68 °F (1.38 bard at 20 °C)	20 psid at 68 °F (1.38 bard at 20 °C)
Recommended Changeout Pressure	35 psid (2.41 bard)	35 psid (2.41 bard)

Sanitization & Sterilization

Chemical Sanitization	Performed using industry standard concentrations of hydrogen peroxide, peracetic acid, sodium hypochlorite and other selected chemicals.
------------------------------	------------------------------------------------------------------------------------------------------------------------------------------

Construction Materials

Filtration Media	Melt-Blown Polypropylene Depth Media
End Caps, Capsule Housing	Polypropylene
Sealing Method	Thermal Bonding
O-Rings/Gaskets Cartridges only	Buna, Viton® (or FKM), EPDM, Silicone, FEP Encapsulated Silicone, FEP Encapsulated Viton (or FKM)

Endotoxins

The levels of bacterial endotoxins in aqueous extracts from GDMB filters are below current USP limits as specified for water for injection.

Extractables

GDMB filters typically exhibit low levels of non-volatile residues.

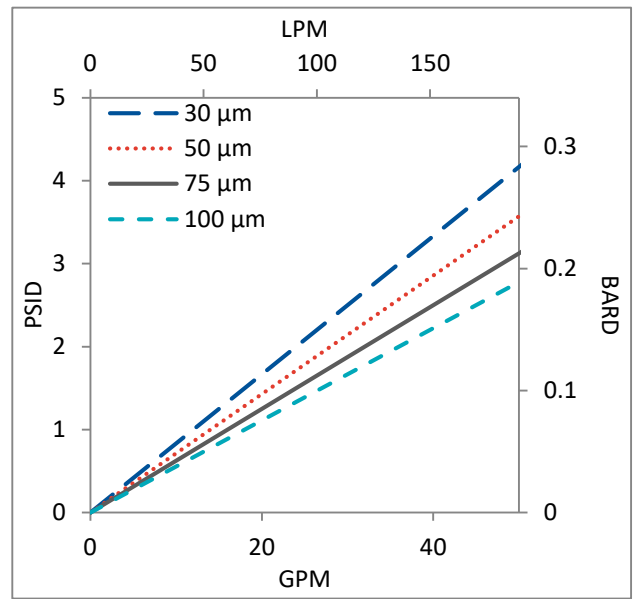
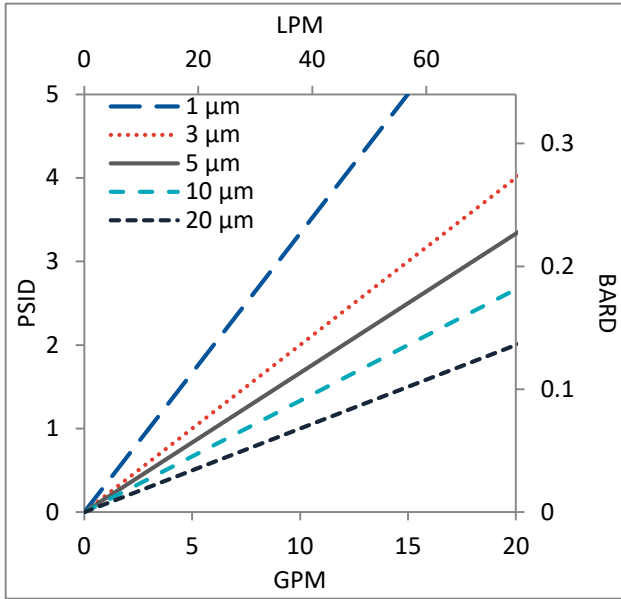
Non-Fiber Releasing

GDMB filters comply with Title 21 CFR sections 210.3 (b)(6) and 211.72, for non-fiber releasing filters.

FDA Compliance

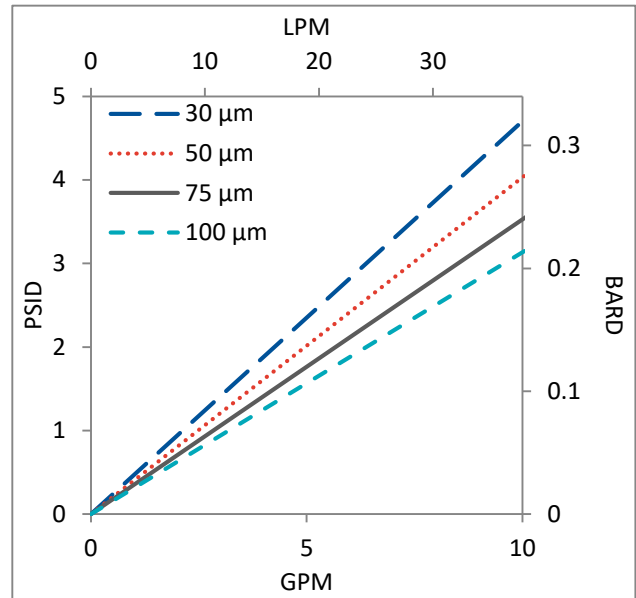
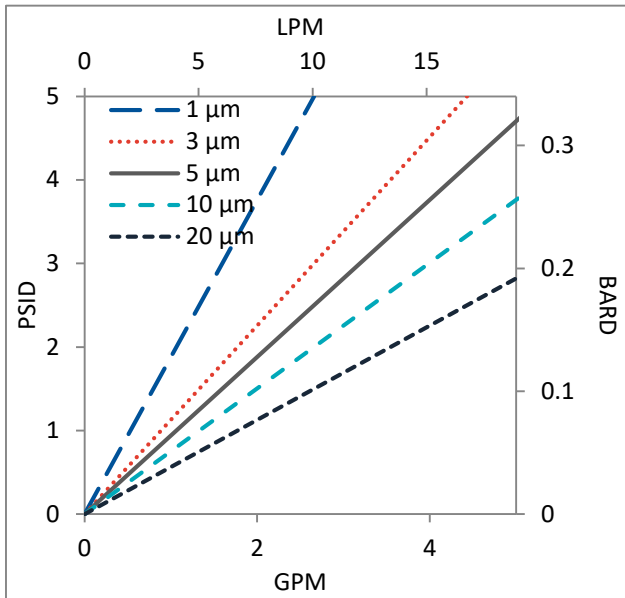
Materials meet the requirements listed by the FDA as appropriate for use in articles intended for repeated food contact as specified in Title 21 CFR sections 174.5, 177.1500, 177.1520, 177.1630, 177.2440, and 177.2600 as applicable. All materials used to make the filters are listed in European Commission Regulation EU/10/2011, Annex 1.

Flow Rates for GDMB Cartridges by Pore Size



Flow rates for Cartridge filters are per 10-inch length. The test fluid is water at ambient temperature.

Flow Rates for GDMB Capsules by Pore Size



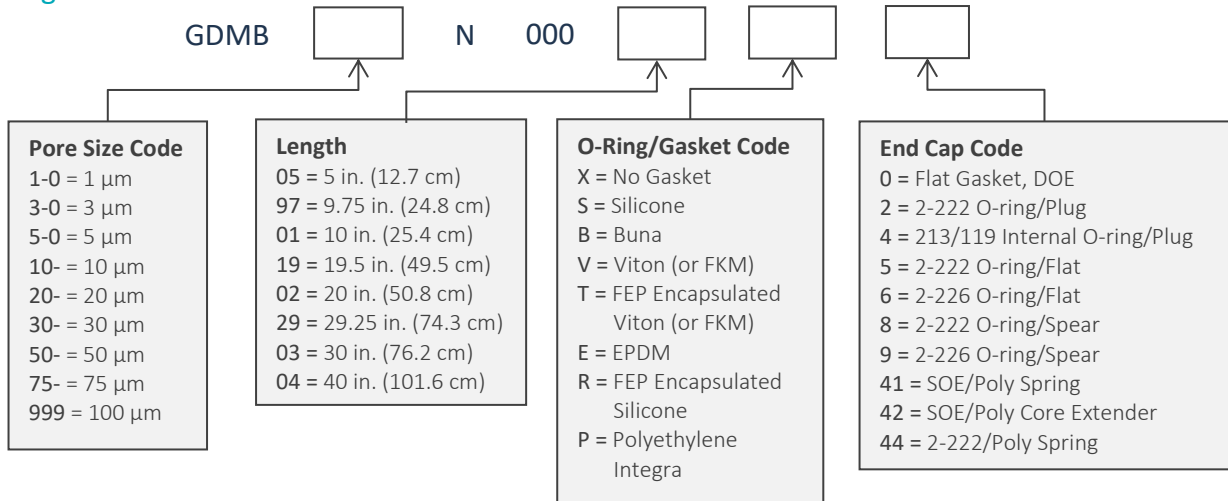
Flow rates for Capsule filters are tested using a 2" capsule filter with 1" sanitary inlet and outlet ports. The test fluid is water at ambient temperature. Flow rates for larger capsules will scale with filtration area. Rates will vary based on end configuration of the capsule.

GDMB Filters Ordering Information

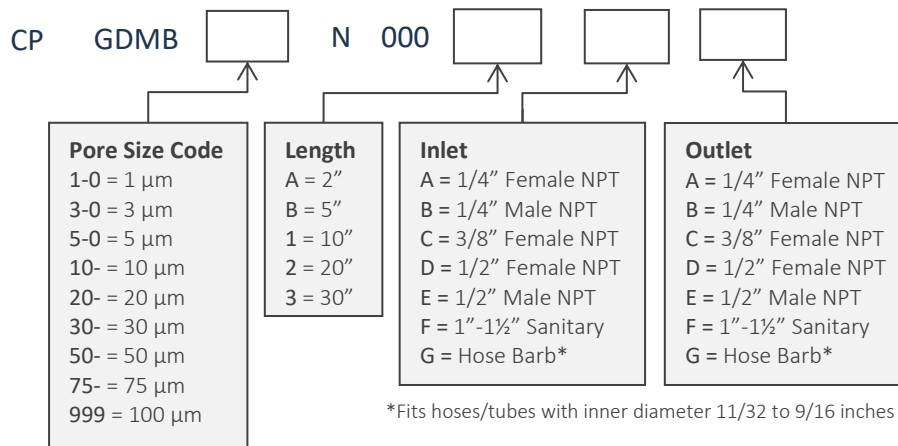
All Critical Process filters are configurable to meet customer specifications.
Fill in the corresponding codes in the boxes below to build your Part Number.

To consult with one of our technical team members, request a quote or place an order:
call (603) 880-4420 or [contact us here](#).

Cartridge Filters

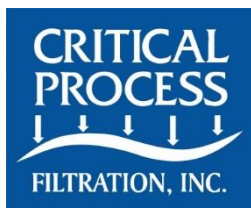


Capsule Filters



Housings

CPF offers Model CSH sanitary housings and Model CIH industrial housings in Single-Round (Inline and T-Style) and Multi-Round configurations. Contact us or visit our website for more information.



One Chestnut Street
Nashua, NH 03060
603.880.4420
FAX: 603.880.4536

CriticalProcess.com

The information contained herein is subject to change without notice. The Critical Process Filtration logo is a trademark of Critical Process Filtration, Inc. Viton is a trademark of DuPont Performance Elastomers L.L.C.
© 2021 Critical Process Filtration, Inc. • All Rights Reserved

Data Sheet GDMBDS Rev B