



# PPD Mini-Capsule Filters

Pleated Polypropylene Depth Media



PPD Mini-Capsule filters are constructed with pleated Polypropylene depth media for prefiltering critical pharmaceutical and healthcare liquids including water, chemicals and solvents. Pore sizes range from 0.10 to 100  $\mu\text{m}$ . Additional filter devices scale from laboratory to full production using identical materials to ensure consistent results.

These hydrophilic filters have superior retention and protect downstream filters by removing large amounts of particulate and other contaminants. PPD filters are rated at 99.9% efficiencies at the indicated pore size. Designed for high capacity and long life makes the PPD Mini-Capsule a very cost-effective filter.

Critical Process provides unrivaled delivery times, technical consulting before purchasing, and very competitively priced high-performance products. Our comprehensive testing & analysis and validation services support your team whenever they need it. Your process experts partnering with our filtration experts is how we deliver your company's solution right the first time.

## Clarification & Prefiltration

## Particle Filtration

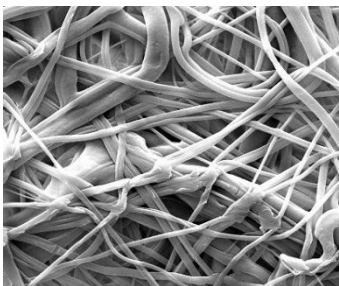


### MINI-CAPSULES – Nominal Dimensions

Body Length: 2.85 in. (7.2 cm)

Overall Length – 3.75 to 5.19 in. (9.5 to 13.2 cm)

Outside Diameter: 2.95 in. (7.5 cm)



PPD Mini-Capsule filters are recommended for clarification & prefiltration in:

- Chemicals
- Intermediates
- Buffers
- WFI, Water Purification
- Medications
- Ophthalmics
- Diagnostics
- Device Cleaning

## Maximum Operating Parameters

MINI-CAPSULES	
<b>Liquid Operational Pressure</b>	80 psi at 68 °F (5.52 bard at 20 °C)
<b>Gases Operational Pressure</b>	60 psi at 68 °F (4.14 bar at 20 °C)
<b>Operating Temperature (water)</b>	110 °F at 30 psid (43 °C at 2.07 bard)
<b>Forward Differential Pressure</b>	50 psid at 68 °F (3.45 bard at 20 °C)
<b>Reverse Differential Pressure</b>	40 psid at 68 °F (2.76 bard at 20 °C)
<b>Recommended Changeout Pressure</b>	35 psid (2.41 bard)

## Sanitization & Sterilization\*

<b>Autoclave</b>	250 °F (121 °C), 30 min, 5+ cycles
<b>Chemical Sanitization</b>	Performed using industry standard concentrations of hydrogen peroxide, peracetic acid, sodium hypochlorite and other selected chemicals.

## Filtration Area

Pleated Depth Media	
Area	0.44 ft <sup>2</sup>
	413 cm <sup>2</sup>

## Construction Materials

<b>Filtration Media</b>	Pleated Polypropylene Depth Media
<b>Media Support</b>	Polypropylene
<b>End Caps, Center Core, Outer Support Cage, Mini-Capsule Housing</b>	Polypropylene
<b>Sealing Method</b>	Thermal Bonding

## Endotoxins

The levels of bacterial endotoxins in aqueous extracts from PPD Mini-Capsule filters are below current USP limits as specified for water for injection.

## TOC and Conductivity

PPD Mini-Capsule filters conform with TOC standards of USP <643> and the water conductivity standards of USP <645> after an appropriate flush with purified water.

## Toxicity Compliance

Materials used to construct PPD Mini-Capsule filters are non-toxic and meet the requirements for the MEM Elution Cytotoxicity Test and the requirements for Biological Reactivity Tests in the current version of the United States Pharmacopeia (USP) for Class VI - 121 °C Plastics.

## Extractables

PPD Mini-Capsule filters typically exhibit low levels of non-volatile residues.

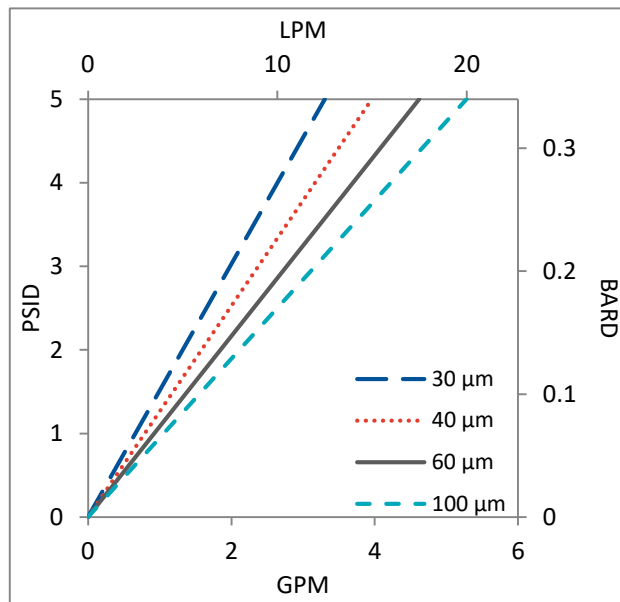
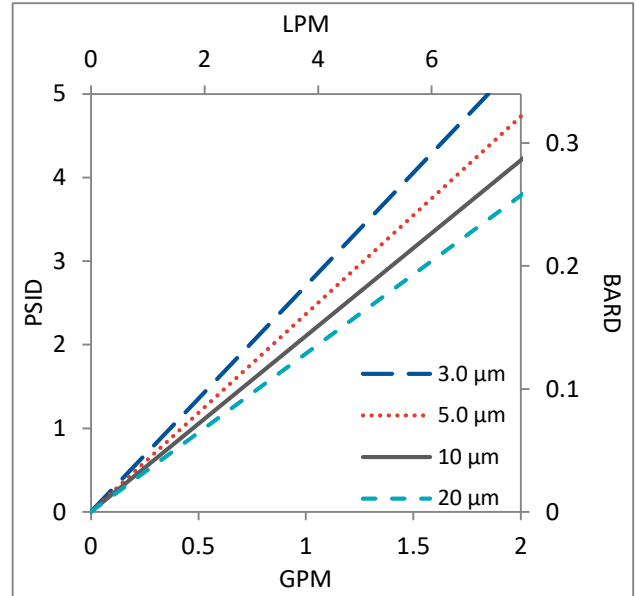
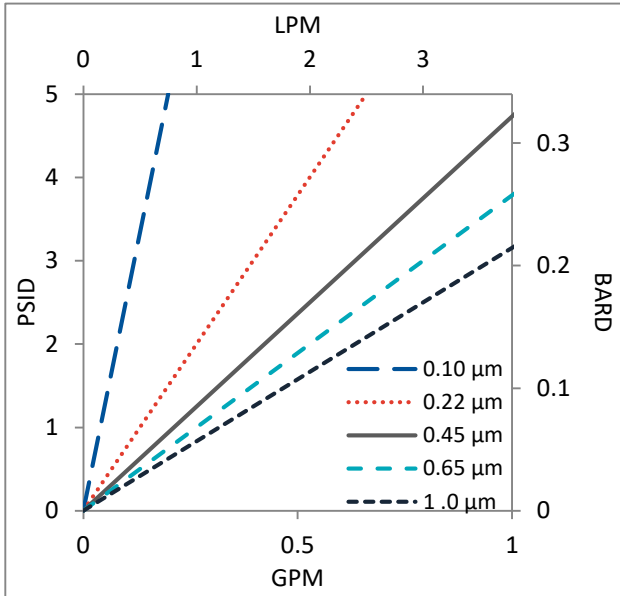
## Non-Fiber Releasing

PPD Mini-Capsule filters comply with Title 21 CFR sections 210.3 (b)(6) and 211.72, for non-fiber releasing filters.

## FDA Compliance

Materials meet the requirements listed by the FDA as appropriate for use in articles intended for repeated food contact as specified in Title 21 CFR sections 174.5, 177.1500, 177.1520, 177.1630, 177.2440, and 177.2600 as applicable.

## Flow Rates for PPD Mini-Capsules by Pore Size



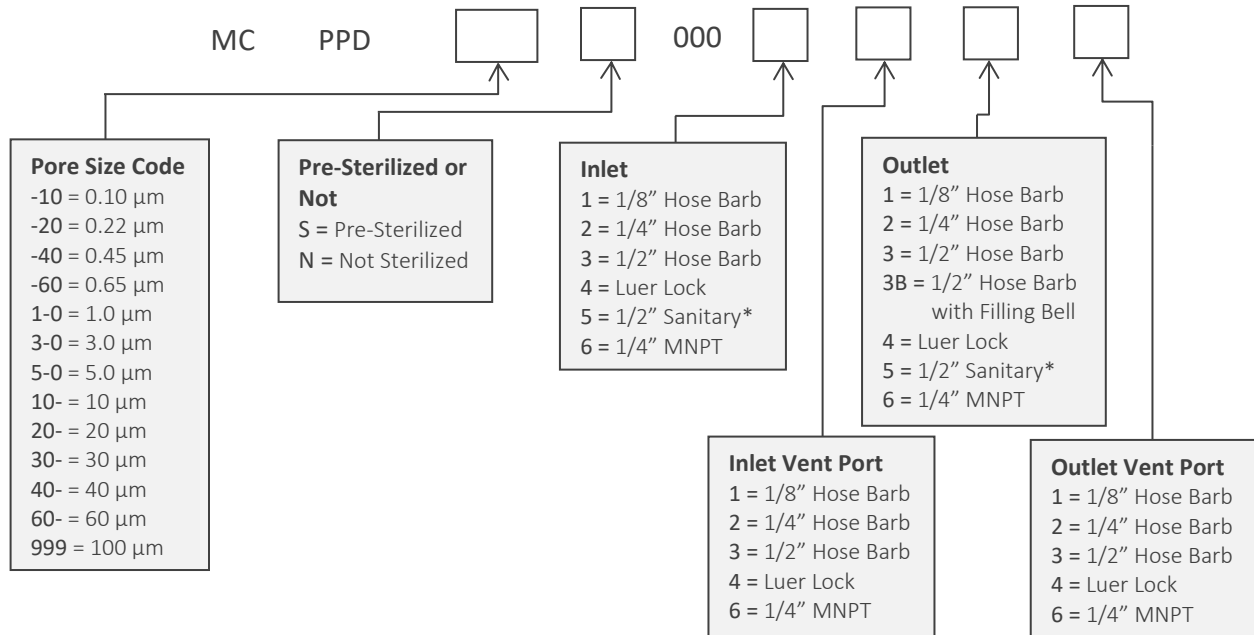
Flow rates for Mini-Capsule filters are per filter. The test fluid is water at ambient temperature. Flows are tested using a mini-capsule filter with 1/2" Sanitary inlet and outlet ports. Rates will vary based on end configuration of the mini-capsule.

## PPD Mini-Capsule Filters Ordering Information

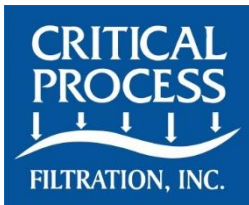
All Critical Process filters are configurable to meet customer specifications.  
Fill in the corresponding codes in the boxes below to build your Part Number.

To consult with one of our technical team members, request a quote or place an order:  
call (603) 880-4220 Ext. 106, or send an email to [sales@criticalprocess.com](mailto:sales@criticalprocess.com)

### Mini-Capsule Filters



\*When choosing the Sanitary Inlet/Outlet, the Luer Lock option is required for the Vent Port



One Chestnut Street  
Nashua, NH 03060  
603.880.4420  
FAX: 603.880.4536  
CriticalProcess.com

The information contained herein is subject to change without notice. The Critical Process Filtration logo is a trademark of Critical Process Filtration, Inc. Viton is a trademark of DuPont Performance Elastomers L.L.C.  
© 2020 Critical Process Filtration, Inc. • All Rights Reserved

Data Sheet PPDMiniDS Rev-