



# PTR Filters

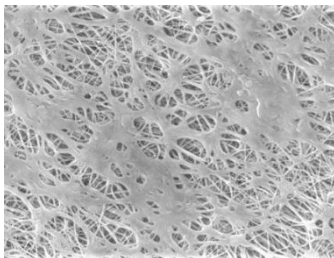
PTFE Membrane



PTR filters are validated Polytetrafluoroethylene (PTFE) membrane cartridge and capsule filters used for sterilizing process gas applications and tank vents. The PTR membrane has a pore size of .22  $\mu\text{m}$  and the filter sizes scale from laboratory to full production using identical materials to ensure consistent results.

These hydrophobic PTR filters have high air flow and low pressure drops. Each cartridge module is individually integrity tested using the water intrusion method before it is released from manufacture.

Critical Process provides unrivaled delivery times, technical consulting before purchasing, and very competitively priced high-performance products. Our comprehensive testing & analysis and validation services support your team whenever they need it. Your process experts partnering with our filtration experts is how we deliver your company's solution right the first time.



PTR filters are recommended for:

- Tank Vents
- Compressed Air
- Pressurized Gases
- Fermentation Air

## Sterilizing Filters

### Tank Vent & Process Gas



CARTRIDGES – Nominal Dimensions

Length: 5 to 40 in. (12.7 to 101.6 cm)

Outside Diameter: 2.75 in. (7.0cm)



CAPSULES – Nominal Dimensions

Length: 2 to 30 in. (5.1 to 76.2 cm)

Outside Diameter: 3.50 in. (8.9 cm)

## Maximum Operating Parameters

	CARTRIDGES	CAPSULES
<b>Gases Operational Pressure</b>	N/A	60 psi at 68 °F (4.13 bar at 20 °C)
<b>Operating Temperature</b>	180 °F at 30 psid (82 °C at 2.06 bard)	110 °F at 30 psid (43 °C at 2.06 bard)
<b>Forward Differential Pressure</b>	80 psid at 68 °F (5.51 bard at 20 °C)	Gas - 60 psi at 68 °F (4.13 bar at 20 °C)
<b>Reverse Differential Pressure</b>	50 psid at 68 °F (3.44 bard at 20 °C)	50 psid at 68 °F (3.44 bard at 20 °C)
<b>Recommended Changeout Pressure</b>	35 psid (2.41 bard)	35 psid (2.41 bard)

## Sanitization & Sterilization

<b>Inline Steam*</b>	275 °F (135 °C), 30 min, 25+ cycles	N/A
<b>Autoclave*</b>	250 °F (121 °C), 30 min, 25+ cycles	250 °F (121 °C), 30 min, 5+ cycles
<b>Chemical Sanitization</b>	Performed using industry standard concentrations of hydrogen peroxide, peracetic acid, sodium hypochlorite and other selected chemicals.	

\*Cartridge Filters – For all elevated temperature procedures above, a stainless-steel support ring is required.

## Filtration Area

	CAPSULES	CARTRIDGES AND CAPSULES				CARTRIDGES
Length	2"	5"	10"	20"	30"	40"
	5.08cm	12.7cm	25.4cm	50.8cm	76.2cm	101.6cm
Area	1.0 ft <sup>2</sup>	3.0 ft <sup>2</sup>	8.68 ft <sup>2</sup>	17.36 ft <sup>2</sup>	26.04 ft <sup>2</sup>	34.72 ft <sup>2</sup>
	0.10m <sup>2</sup>	0.28m <sup>2</sup>	0.76m <sup>2</sup>	1.52m <sup>2</sup>	2.29m <sup>2</sup>	3.05m <sup>2</sup>

## Integrity Testing

PORE SIZE	WATER INTRUSION TEST PRESSURE		BUBBLE POINT MINIMUM*		WATER INTRUSION SPECIFICATIONS (mL/10 min)						
	PSIG	BARG	PSIG	BARG	Length	2"	5"	10"	20"	30"	40"
0.22	35	2.41	18	1.24	0.22µm	≤ 1.6	≤ 4.8	≤ 13	≤ 26	≤ 39	≤ 52

\* Bubble Point for membrane wetted with 60% IPA / 40% water

## Construction Materials

<b>Filtration Media</b>	Polytetrafluoroethylene (PTFE) Membrane
<b>Media Support*</b>	Polypropylene
<b>End Caps, Center Core, Outer Support Cage, Capsule Housing*</b>	Polypropylene
<b>Sealing Method</b>	Thermal Bonding
<b>O-Rings/Gaskets Cartridges only</b>	Buna, Viton® (or FKM), EPDM, Silicone, FEP Encapsulated Silicone, FEP Encapsulated Viton (or FKM)

\*High Temperature Cartridge configurations are also available.

## Validation

PTR cartridges are validated using test procedures that comply with the intent of BFE protocols for the determination of bacterial retention in filters used for air and gas filtration. The challenge level for the 0.22 µm filter membrane is  $7.5 \times 10^7$  organisms per cm<sup>2</sup> of filter media of *Brevundimonas diminuta* (ATCC 19146).

PTR filters are also validated using test procedures that comply with ASTM F 838-15(ae1) protocols for the determination of bacterial retention in filters used for liquid filtration. The challenge level is a minimum of  $10^7$  *Brevundimonas diminuta* organisms per cm<sup>2</sup> of filter media. CPF filters have > 7-log removal when challenged with the *Brevundimonas diminuta* (0.22µm meets the FDA definition of sterilizing grade filters).

Validation Guides available upon request.

## Endotoxins

The levels of bacterial endotoxins in aqueous extracts from PTR filters are below current USP limits as specified for water for injection.

## Extractables

PTR filters typically exhibit low levels of non-volatile residues.

## TOC and Conductivity

The PTR filters conform with TOC standards of USP <643> and the water conductivity standards of USP <645> after an appropriate flush with purified water.

## Toxicity Compliance

Materials used to construct the PTR filters are non-toxic and meet the requirements for the MEM Elution Cytotoxicity Test and the requirements for Biological Reactivity Tests in the current version of the United States Pharmacopeia (USP) for Class VI - 121 °C Plastics.

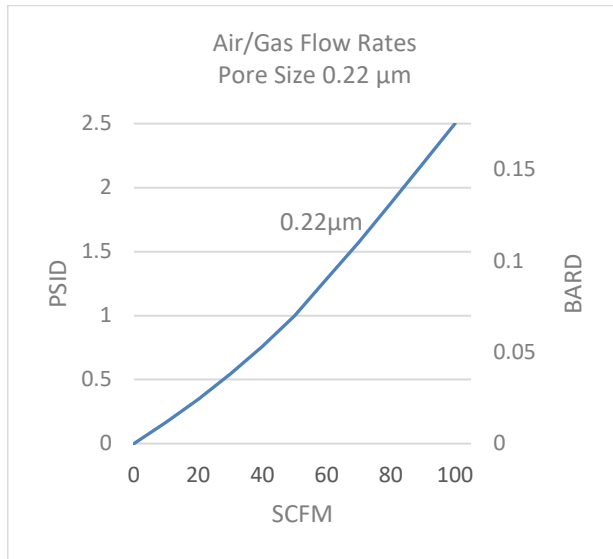
## Non-Fiber Releasing

PTR filters comply with Title 21 CFR sections 210.3 (b)(6) and 211.72, for non-fiber releasing filters.

## FDA Compliance

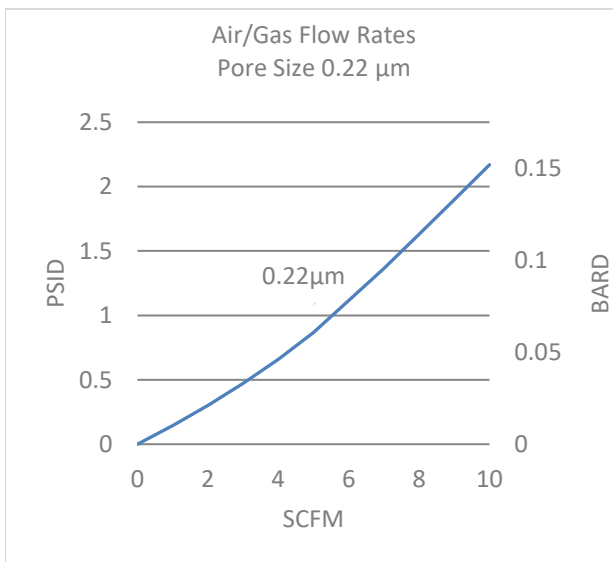
Materials meet the requirements listed by the FDA as appropriate for use in articles intended for repeated food contact as specified in Title 21 CFR sections 174.5, 177.1500, 177.1520, 177.1630, 177.2440, and 177.2600 as applicable.

## Flow Rates for PTR Cartridges



Flow rates for Cartridge filters are per 10-inch length. The test fluid is compressed air at ambient temperature.

## Flow Rates for PTR Capsules

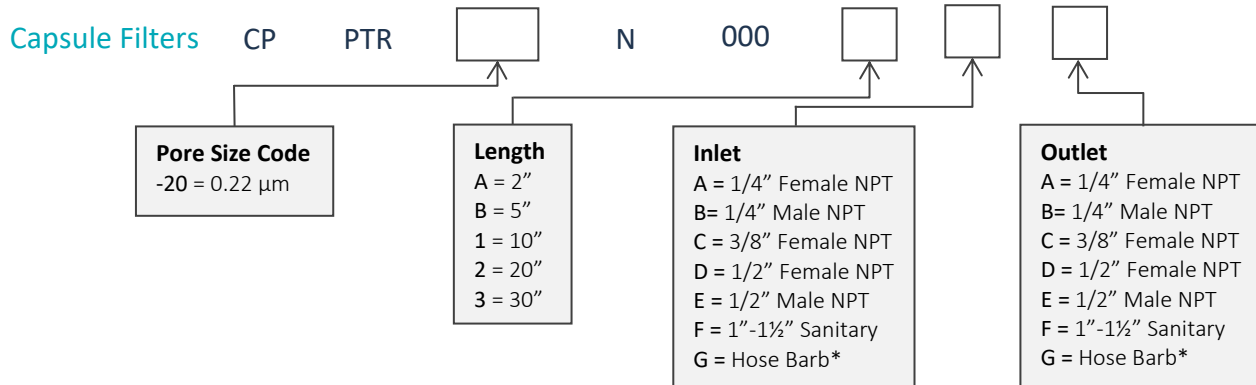
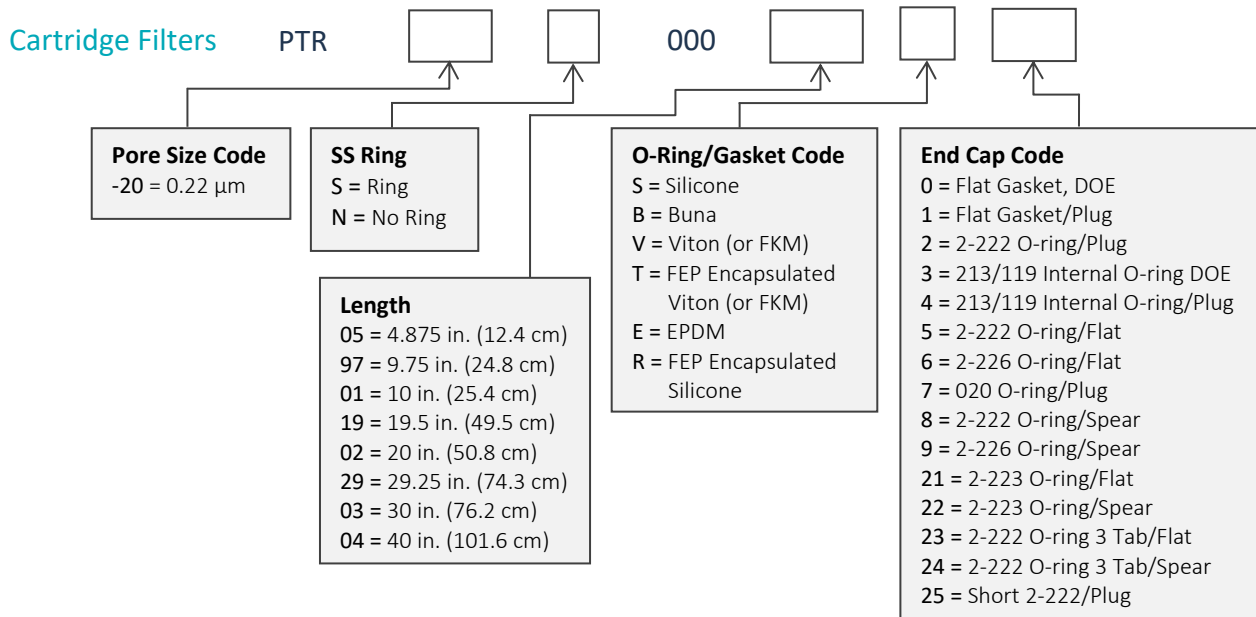


Flow rates for Capsule filters are per square foot of membrane area. The test fluid is compressed air at ambient temperature. Flows are tested using a 2" capsule filter with 1/2" FNPT inlet and outlet ports. Rates will vary based on end configuration of the capsule.

## PTR Filters Ordering Information

All Critical Process filters are configurable to meet customer specifications.  
Fill in the corresponding codes in the boxes below to build your Part Number.

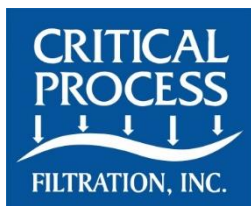
To consult with one of our technical team members, request a quote or place an order:  
call (603) 880-4220 Ext. 106, or send an email to [sales@criticalprocess.com](mailto:sales@criticalprocess.com)



\*Fits hoses/tubes with inner diameter 11/32 to 9/16 inches

## Housings

CPF offers Model CSH sanitary housings in Single-Round (Inline and T-Style) and Multi-Round (3, 6, 8, 12 and 21-round) configurations.



One Chestnut Street  
Nashua, NH 03060  
603.880.4420  
FAX: 603.880.4536

CriticalProcess.com

The information contained herein is subject to change without notice. The Critical Process Filtration logo is a trademark of Critical Process Filtration, Inc. Viton is a trademark of DuPont Performance Elastomers L.L.C.  
© 1998-2019 Critical Process Filtration, Inc. • All Rights Reserved

Data Sheet PTRDS0919 RevA