



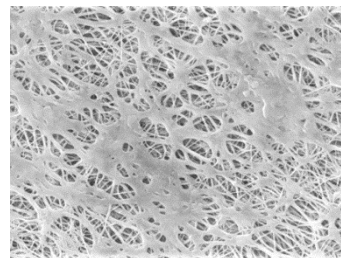
ETM/HT Filters

High Temperature PTFE Membrane



ETM/HT cartridge filters consist of a single layer Polytetrafluoroethylene (PTFE) membrane and are designed with a modified membrane support and hardware material to allow higher operating temperatures (liquid up to 203°F, air and gas up to 221°F). Designed to meet the needs of the electronics and high-purity chemical industries, ETM/HT products are resistant to virtually all chemicals making them very effective in removing particles in gas and non-aqueous liquid applications. They are most often used as final filters at the point-of-use, such as at tools. The ETM/HT can also be ordered pre-wetted with water for use in aqueous solutions. Pore sizes range from 0.05 to 5.0 μm . Each filter is individually tested to ensure integrity.

Critical Process provides unrivaled delivery times, technical consulting before purchasing, and very competitively priced high-performance products. Our comprehensive testing & analysis and validation services support your team whenever they need it. Your process experts partnering with our filtration experts is how we deliver your company's solution right the first time.



ETM/HT filters are recommended for:

- Compressed Air
- Pressurized Gases
- Non-Aqueous Chemicals
- Solvents
- Tank Ventilation

Fine Particle Removal
Tank Vent & Process Gas



CARTRIDGES – Nominal Dimensions
Length: 5 to 40 in. (12.7 to 101.6 cm)
Outside Diameter: 2.75 in. (7.0 cm)

Maximum Operating Parameters

	CARTRIDGES
Operating Temperature (air/gas)	221 °F (105°C)
Operating Temperature (water)	203 °F at 30 psid (95 °C at 2.07 bard)
Forward Differential Pressure	80 psid at 68 °F (5.52 bard at 20 °C) (Liquid and Gas)
Reverse Differential Pressure	50 psid at 68 °F (3.45 bard at 20 °C)
Recommended Changeout Pressure	35 psid (2.41 bard)

Sanitization & Sterilization

Filtered Hot Water	90 °C (194 °F), 30 minutes, multiple cycles, max 3 psid forward flow
Inline Steam	275 °F (135 °C), 30 min, 25+ cycles
Autoclave	250 °F (121 °C), 30 min, 25+ cycles
Chemical Sanitization	Performed using industry standard concentrations of hydrogen peroxide, peracetic acid, sodium hypochlorite and other selected chemicals.

Filtration Area (Nominal)

	CARTRIDGES				
Length	5"	10"	20"	30"	40"
	12.7cm	25.4cm	50.8cm	76.2cm	101.6cm
Area	3.0 ft ²	7.0 ft ²	14.0 ft ²	21.0 ft ²	28.0 ft ²
	0.28m ²	0.65m ²	1.30m ²	1.95m ²	2.60m ²

Integrity Testing

PORE SIZE	BUBBLE POINT MINIMUM*	
	PSIG	BARG
µm		
0.05	43	3.0
0.10	22	1.5
0.22	15	1.0
0.45	9	0.62
1.0	6	0.41
3.0	2	0.14
5.0	1	0.07

* Bubble Point for membrane wetted with 60% IPA / 40% water solution.

Construction Materials

Filtration Media	Polytetrafluoroethylene (PTFE) Membrane
Media Support	Polypropylene
End Caps, Center Core, Outer Support Cage	Polypropylene
Sealing Method	Thermal Bonding
O-Rings/Gaskets	Buna, Viton® (or FKM), EPDM, Silicone, FEP Encapsulated Silicone, FEP Encapsulated Viton (or FKM)

Extractables

ETM/HT filters typically exhibit low levels of non-volatile residues.

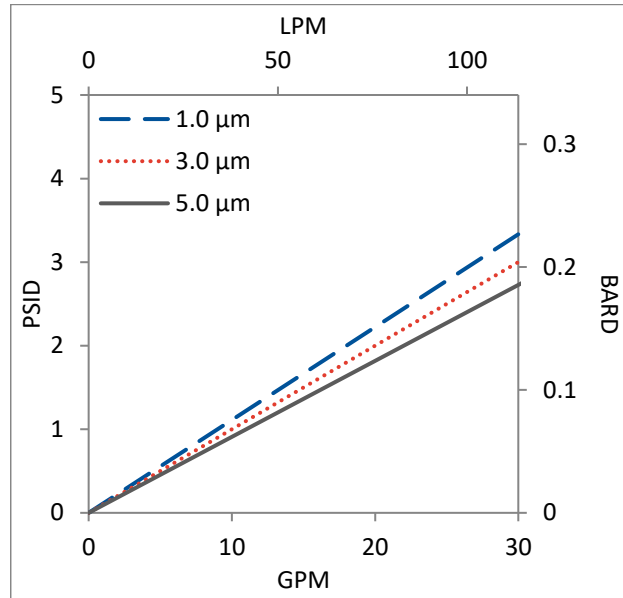
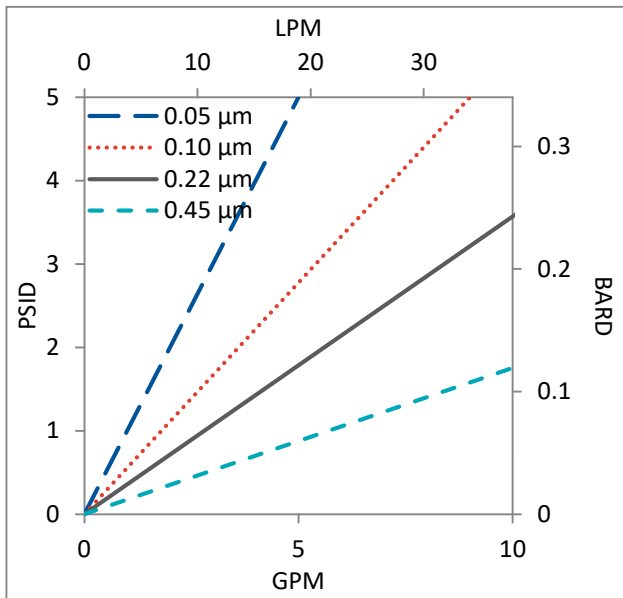
TOC and Conductivity

ETM/HT filter water effluent conforms with the TOC and water conductivity standards of SEMI Standard F63 after an appropriate flush with ultrapure water.

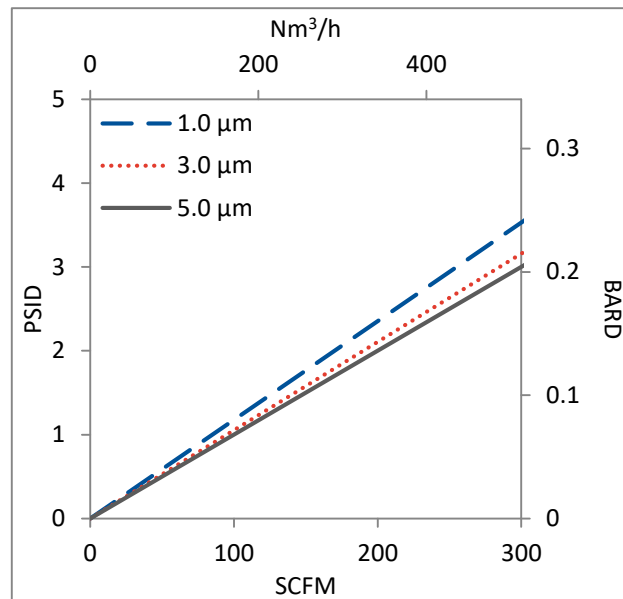
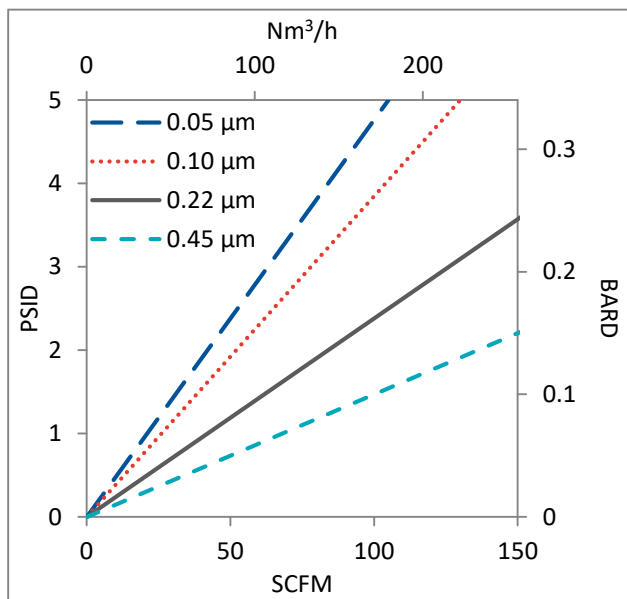
Non-Fiber Releasing

ETM/HT filters comply with Title 21 CFR sections 210.3 (b)(6) and 211.72, for non-fiber releasing filters.

Water Flow Rates for ETM/HT Cartridges by Pore Size



Air Flow Rates for ETM/HT Cartridges by Pore Size



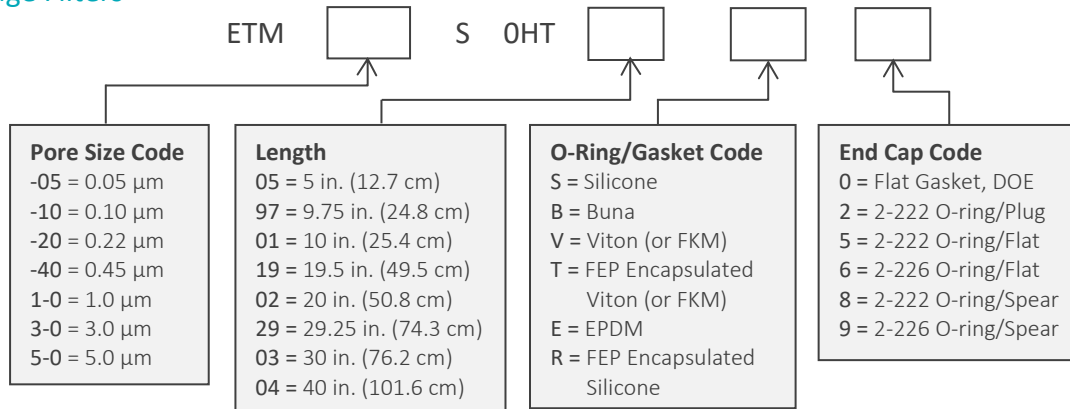
Flow rates for Cartridge filters are per 10-inch length. The test fluid is water or compressed air at ambient temperature.

ETM/HT Filters Ordering Information

All Critical Process filters are configurable to meet customer specifications.
Fill in the corresponding codes in the boxes below to build your Part Number.

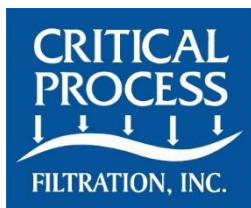
To consult with one of our technical team members, request a quote or place an order:
call (603) 880-4420 or [contact us here](#).

Cartridge Filters



Housings

CPF offers Model CSH sanitary housings in Single-Round (Inline and T-Style) and Multi-Round (3, 6, 8, 12 and 21-round) configurations.



One Chestnut Street
Nashua, NH 03060
603.880.4420
FAX: 603.880.4536

CriticalProcess.com

The information contained herein is subject to change without notice. The Critical Process Filtration logo is a trademark of Critical Process Filtration, Inc. Viton is a trademark of DuPont Performance Elastomers L.L.C.
© 2021 Critical Process Filtration, Inc. • All Rights Reserved

Data Sheet ETMHTDS Rev A