



# SPS Filters

Single Layer PES Membrane

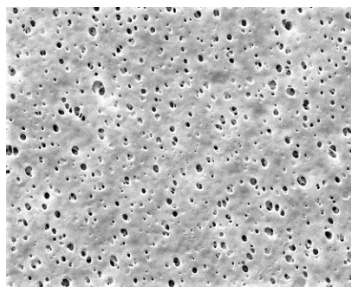


SPS Filters provide a wide selection of validated, single layer Polyethersulfone (PES) cartridge and capsule filters used for the sterilizing of aqueous liquids. Pore sizes range from 0.03 to 1.2  $\mu\text{m}$  and the filter sizes scale from laboratory to full production using identical materials to ensure consistent results.

The hydrophilic SPS filters have low binding characteristics that are ideal for filtering products with preservatives and high protein solutions that can adsorb to media. SPS filters deliver high flow and throughput with compatibility across a wide pH range.

SPS filters are flushed to remove manufacturing debris and reduce extractables. Products are 100% integrity tested. SPS capsules are available pre-sterilized.

Critical Process provides unrivaled delivery times, technical consulting before purchasing, and very competitively priced high-performance products. Our comprehensive testing & analysis and validation services support your team whenever they need it. Your process experts partnering with our filtration experts is how we deliver your company's solution right the first time.



SPS is recommended for:

- SVPs & LVPs
- Diagnostics
- Buffers
- WFI, Water Purification
- Vaccines
- Biologicals
- Ophthalmics

## Sterilizing Filters



**CARTRIDGES – Nominal Dimensions**  
Length: 5 to 40 in. (12.7 to 101.6 cm)  
Outside Diameter: 2.75 in. (7.0 cm)



**CAPSULES – Nominal Dimensions**  
Length: 2 to 30 in. (5.1 to 76.2 cm)  
Outside Diameter: 3.50 in. (8.9 cm)

## Maximum Operating Parameters

	CARTRIDGES	CAPSULES
<b>Liquid Operational Pressure</b>	N/A	80 psi at 68 °F (5.52 bard at 20 °C)
<b>Gases Operational Pressure</b>	N/A	60 psi at 68 °F (4.14 bar at 20 °C)
<b>Operating Temperature (water)</b>	180 °F at 30 psid (82 °C at 2.07 bard)	110 °F at 30 psid (43 °C at 2.07 bard)
<b>Forward Differential Pressure</b>	80 psid at 68 °F (5.52 bard at 20 °C) (Liquid and Gas)	Liquid - 80 psid at 68 °F (5.52 bard at 20 °C) Gas - 60 psi at 68 °F (4.14 bar at 20 °C)
<b>Reverse Differential Pressure</b>	50 psid at 68 °F (3.45 bard at 20 °C)	50 psid at 68 °F (3.45 bard at 20 °C)
<b>Recommended Changeout Pressure</b>	35 psid (2.41 bard)	35 psid (2.41 bard)

## Sanitization & Sterilization

<b>Filtered Hot Water*</b>	90 °C (194 °F), 30 minutes, multiple cycles, max 3 psid forward flow	N/A
<b>Inline Steam*</b>	275 °F (135 °C), 30 min, 25+ cycles	N/A
<b>Autoclave*</b>	250 °F (121 °C), 30 min, 25+ cycles	250 °F (121 °C), 30 min, 5+ cycles
<b>Chemical Sanitization</b>	Performed using industry standard concentrations of hydrogen peroxide, peracetic acid, sodium hypochlorite and other selected chemicals.	

\*Cartridge Filters – For all elevated temperature procedures above, a stainless-steel support ring is required.

## Filtration Area (Nominal)

	CAPSULES	CARTRIDGES AND CAPSULES				CARTRIDGES
Length	2"	5"	10"	20"	30"	40"
	5.08cm	12.7cm	25.4cm	50.8cm	76.2cm	101.6cm
Area	1.2 ft <sup>2</sup>	3.4 ft <sup>2</sup>	7.3 ft <sup>2</sup>	14.6 ft <sup>2</sup>	21.9 ft <sup>2</sup>	29.2 ft <sup>2</sup>
	0.11m <sup>2</sup>	0.32m <sup>2</sup>	0.68m <sup>2</sup>	1.36m <sup>2</sup>	2.04m <sup>2</sup>	2.72m <sup>2</sup>

## Integrity Testing

PORE SIZE	DIFFUSION TEST PRESSURE		BUBBLE POINT MINIMUM	
	PSIG	BARG	PSIG	BARG
μm				
0.03	60	4.14	**	**
0.10	48	3.31	**	**
0.22	35	2.41	50	3.4
0.45	20	1.38	25	1.7
0.65	15	1.03	19	1.3
0.80	12	0.83	15	1.0
1.0	8	0.55	10	0.7
1.2	7	0.48	9	0.6

DIFFUSION SPECIFICATIONS						
Length	2"	5"	10"	20"	30"	40"
mL/min (All Pore Sizes)	≤ 2.9	≤ 8.6	≤ 20	≤ 40	≤ 60	≤ 80

\*\* Test pressure exceeds operational limits of capsule filters.  
Use the Diffusion Test method.

## Construction Materials

<b>Filtration Media</b>	Single Layered Asymmetric Polyethersulfone (PES) Membrane
<b>Media Support</b>	Polypropylene
<b>End Caps, Center Core, Outer Support Cage, Capsule Housing</b>	Polypropylene
<b>Sealing Method</b>	Thermal Bonding
<b>O-Rings/Gaskets Cartridges only</b>	Buna, Viton® (or FKM), EPDM, Silicone, FEP Encapsulated Silicone, FEP Encapsulated Viton (or FKM)

## Validation

SPS filters are validated using test procedures that comply with ASTM F 838-15(ae1) protocols for the determination of bacterial retention in filters used for liquid filtration. The challenge level is a minimum of  $10^7$  organisms per  $\text{cm}^2$  of filter media. CPF filters have > 7-log removal when challenged with the organisms listed below (0.03 $\mu\text{m}$ , 0.10 $\mu\text{m}$  and 0.22 $\mu\text{m}$  meet the FDA definition of sterilizing grade filters).

0.03 $\mu\text{m}$ : *Acholeplasma laidlawii*

0.10 $\mu\text{m}$ : *Brevundimonas diminuta*

0.22 $\mu\text{m}$ : *Brevundimonas diminuta*

0.45 $\mu\text{m}$ : *Serratia marcescens*

0.65 $\mu\text{m}$ : *Saccharomyces cerevisiae*

Validation Guides available upon request.

## Endotoxins

The levels of bacterial endotoxins in aqueous extracts from SPS filters are below current USP limits as specified for water for injection.

## Extractables

SPS filters typically exhibit low levels of non-volatile residues.

## TOC and Conductivity

SPS filters conform with TOC standards of USP <643> and the water conductivity standards of USP <645> after an appropriate flush with purified water.

## Toxicity Compliance

Materials used to construct SPS filters are non-toxic and meet the requirements for the MEM Elution Cytotoxicity Test and the requirements for Biological Reactivity Tests in the current version of the United States Pharmacopeia (USP) for Class VI - 121 °C Plastics.

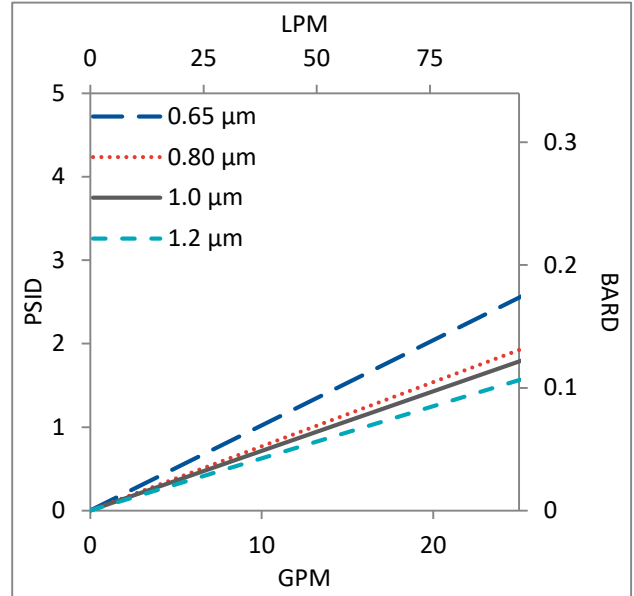
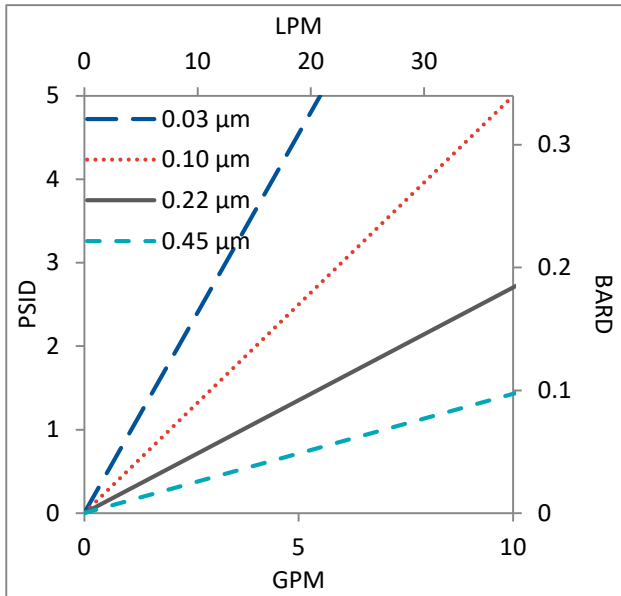
## Non-Fiber Releasing

The SPS filters comply with Title 21 CFR sections 210.3 (b)(6) and 211.72, for non-fiber releasing filters.

## FDA Compliance

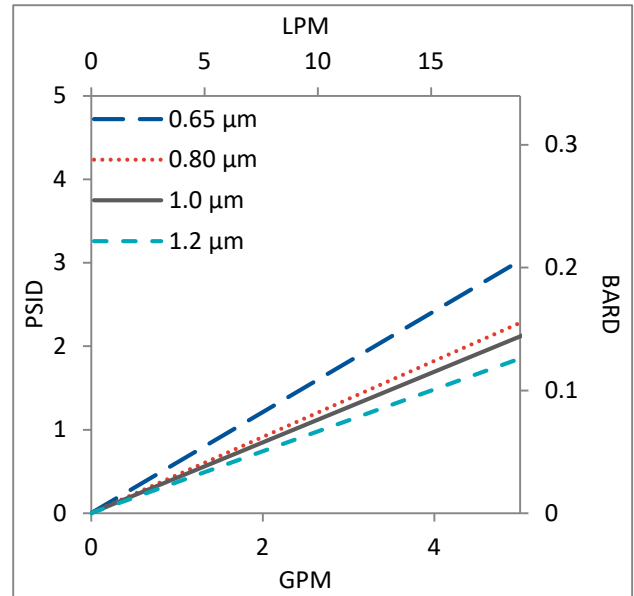
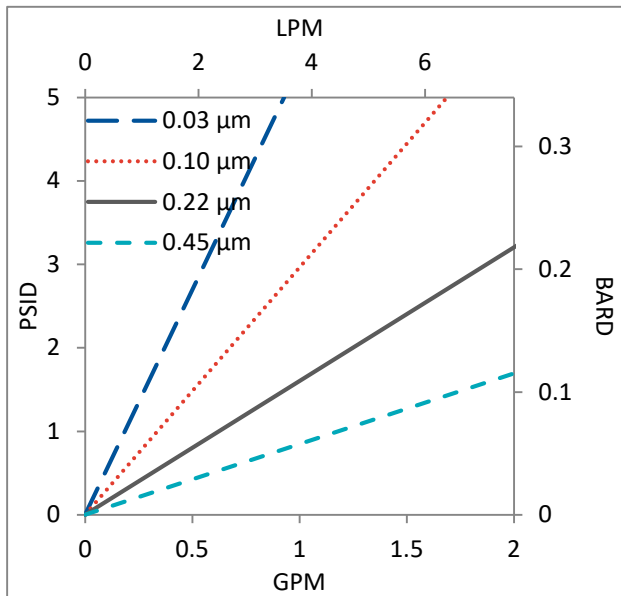
Materials meet the requirements listed by the FDA as appropriate for use in articles intended for repeated food contact as specified in Title 21 CFR sections 174.5, 177.1500, 177.1520, 177.1630, 177.2440, and 177.2600 as applicable.

## Flow Rates for SPS Cartridges by Pore Size



Flow rates for Cartridge filters are per 10-inch length. The test fluid is water at ambient temperature.

## Flow Rates for SPS Capsules by Pore Size



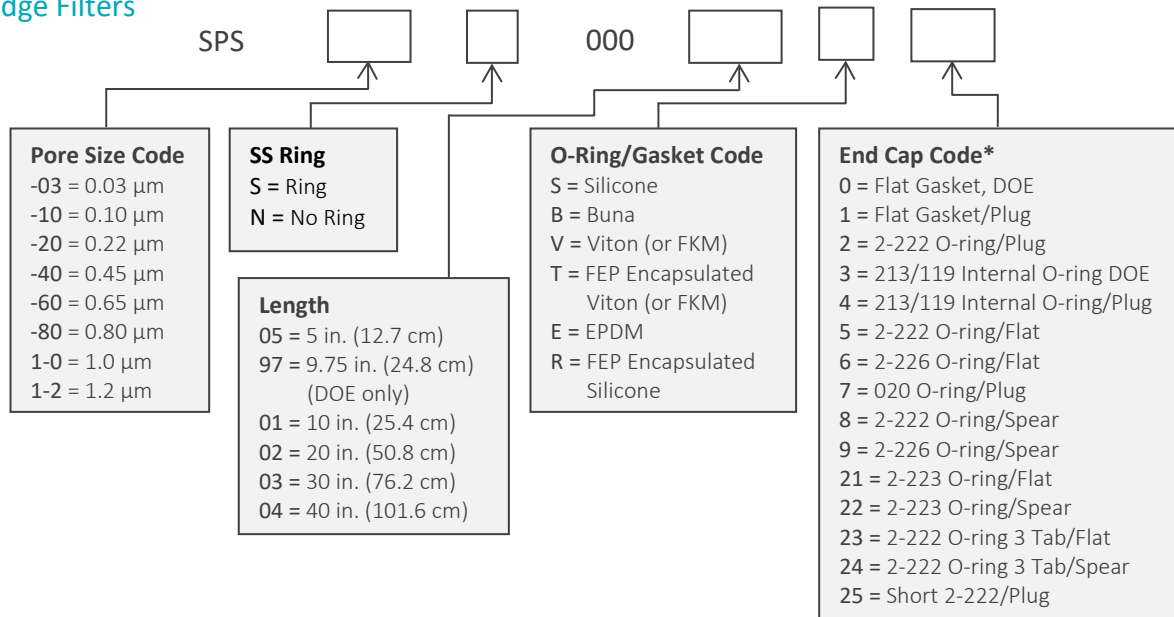
Flow rates for Capsule filters are tested using a 2" capsule filter with 1" sanitary inlet and outlet ports. The test fluid is water at ambient temperature. Flow rates for larger capsules will scale with filtration area. Rates will vary based on end configuration of the capsule.

## SPS Filters Ordering Information

All Critical Process filters are configurable to meet customer specifications.  
Fill in the corresponding codes in the boxes below to build your Part Number.

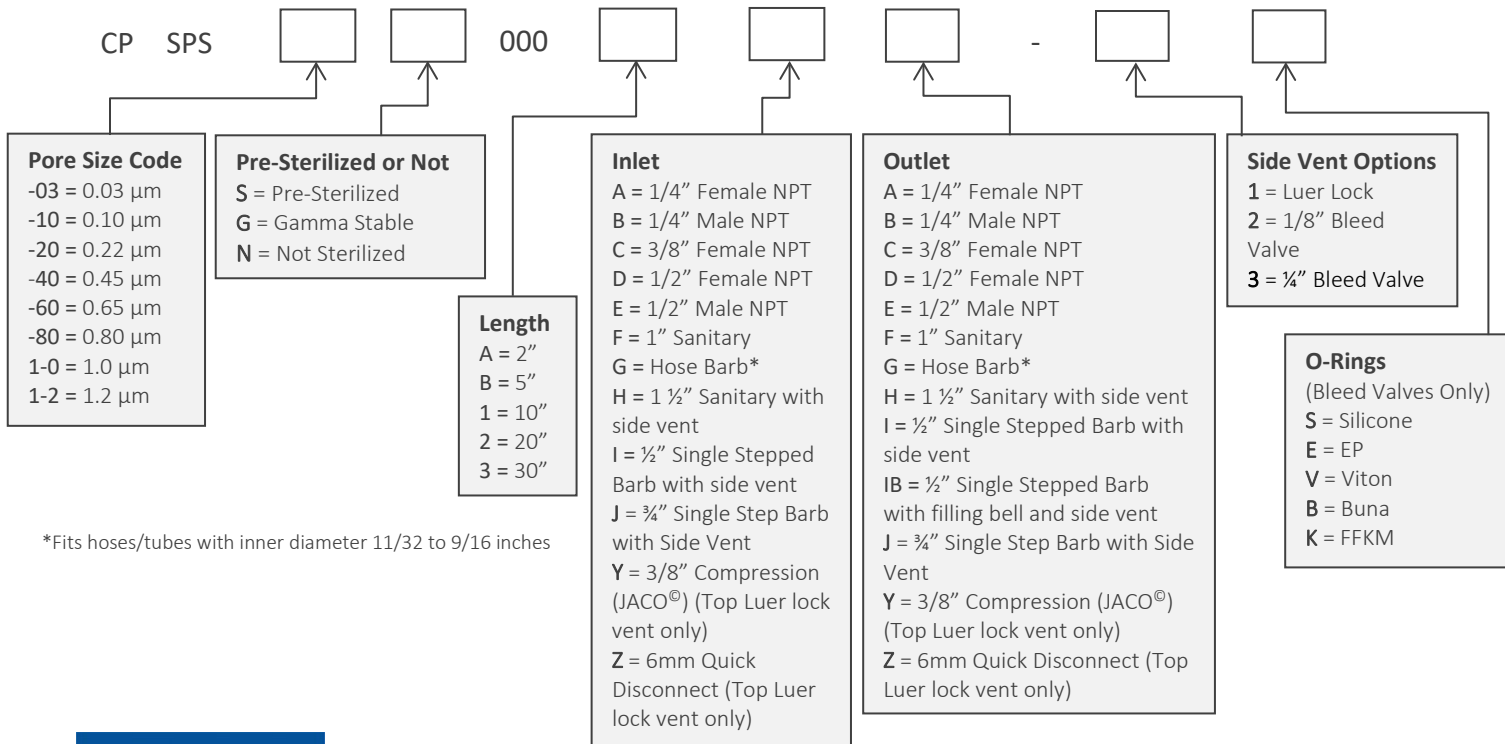
To consult with one of our technical team members, request a quote or place an order:  
call (603) 880-4420 Ext. 106, or send an email to [sales@criticalprocess.com](mailto:sales@criticalprocess.com)

### Cartridge Filters



[\\*Additional end configurations available](#)

### Capsule Filters



\*Fits hoses/tubes with inner diameter 11/32 to 9/16 inches



One Chestnut Street  
Nashua, NH 03060  
603.880.4420  
FAX: 603.880.4536

CriticalProcess.com

The information contained herein is subject to change without notice. The Critical Process Filtration logo is a trademark of Critical Process Filtration, Inc. Viton is a trademark of DuPont Performance Elastomers L.L.C.  
© 2025 Critical Process Filtration, Inc. • All Rights Reserved

Data Sheet SPSDS Rev B