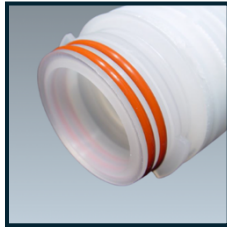
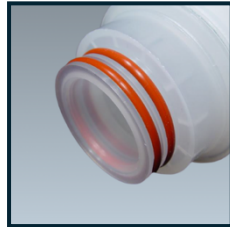


Cartridge Filter End Fitting Guide

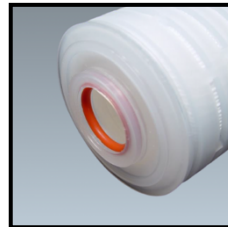
Use this guide to find the end caps that will fit your housing. The code to use when ordering your filter is shown in the list below. Reference our individual product data sheets to find detailed ordering information.



2-226 O-Ring



2-222 O-Ring



213/119 Internal
O-Ring



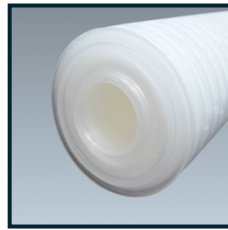
Flat Gasket



Spear/Fin



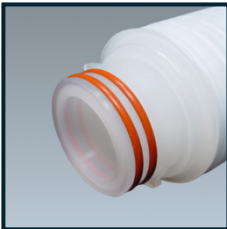
Flat Cap



Recessed Plug



020 Internal O-Ring



2-223 O-Ring



2-222 O-Ring/3-
Tab*

End Cap Codes and Options

Note: Consult factory if other End Cap Configurations are required.

0 = Flat Gasket, DOE	25 = Short 2-222/Plug
1 = Flat Gasket/Plug	26 = Short 2-222/Flat Cap
2 = 2-222 O-Ring/Plug	27 = 226 Spacer / Flat Spear
3 = 213/119 Internal O-ring DOE	28 = 222 Short / Spear
4 = 213/119 Internal O-ring/Plug	29 = 2-226 (No Tabs) / Flat Cap
5 = 2-222 O-ring/Flat	32 = Internal O-Ring/Flat
6 = 2-226 O-ring/Flat	33 = 226/Plug
7 = 020 O-ring/Plug	40 = 2-116 Internal O-Ring/Flat – Junior Cartridge Specific
8 = 2-222 O-ring/Spear	41 = SOE/Poly Spring*
9 = 2-226 O-ring/Spear	42 = SOE/Poly Core Extender*
21 = 2-223 O-ring/Flat	44 = 2-222/Poly Spring*
22 = 2-223 O-ring/Spear	
23 = 2-222 O-ring 3 Tab/Flat	
24 = 2-222 O-ring 3 Tab/Spear	*GDMB Specific

*Stainless steel support rings are available in the 2-222 and 2-226 end caps. Please reference the ordering guide on individual product data sheets for how to specify stainless steel support rings.